

# First United Church

## Annual Report

# 2022



# Table of Contents

Our Mission Statement .....	1
Core Values .....	1
Identity Statement .....	1
Affirming Vision Statement.....	1
2022 Funerals.....	2
Other Members who died in 2022.....	2
2022 Baptisms.....	2
Life Elders as of December 31, 2022.....	3
2022 Marriages .....	3
2022 Members by Confirmation, Profession of Faith and Transfer of Memberships .....	3
Membership Report.....	4
Staff.....	4
Chair of Council .....	5
Minister .....	6
Office Managers.....	8
Choir Director.....	9
Building and Property Committee .....	10
Faith Formation Committee.....	11
Affirming Ministry Working Group .....	13
Creation Station Working Group .....	15
Earthcare Partners Working Group .....	16
Sunday School Working Group .....	18
Membership and Pastoral Care Committee .....	20
Ministry and Personnel Committee .....	21
Outreach Committee .....	22
Loose Change Supper Working Group.....	23
Refugee Sponsorship Working Group.....	24
Living Skies Regional Council .....	25
Stewardship Committee .....	28
Fundraising Working Group .....	29
Memorial Working Group.....	30
Nominations Working Group.....	31
Trustees.....	38
Worship and Music Committee .....	39

Choir.....	40
UCW .....	41
UCW Audit Statement.....	42
First United Church Operating Fund .....	43
Balance Sheet.....	43
Profit and Loss .....	45
First United Church Planned Giving Funds .....	52
Balance Sheet.....	52
Profit and Loss.....	53
Reviewer Report .....	54
2022 Budget Proposal.....	55
First United Church 2023 Budget – Short Form.....	56
First United Church 2023 Budget – Detailed .....	57
First United Church 2023 M&S Budget.....	66
First United Church Annual General Meeting March 6, 2022 .....	67
Congregational Meeting – New Governance Model .....	70
Appendix I - First United Church Governance Structure .....	72
Appendix II – Organizational Chart .....	75

# FIRST UNITED CHURCH

## Our Mission Statement

“We at First United Church  
are called by the Spirit to be a  
Caring Community of Faith  
actively pursuing  
Spiritual Growth and  
Compassionate Outreach”

## Core Values

Acceptance  
Inclusiveness  
Spirituality  
Hospitality  
Respect  
Social Justice

## Identity Statement

Guided by the Spirit, we:

- Embrace all forms of human diversity;
- Explore new paths to being a Christian community in today’s world;
- Engage in a variety of ways of experiencing God;
- Strive to be compassionate and caring;
- Reach out locally and globally to enhance the lives of all.

In Wisdom, this is our journey.



## Affirming Vision Statement



We, the congregation of First United Church, declare publicly our commitment to creating a community that welcomes and values all people –  
people of all ages, abilities, genders, racial identities, sexual orientations, gender identities, family configurations, cultural backgrounds, and economic circumstances, and  
people who have had any other experiences that have led to exclusion, marginalization, or oppression within church or society.

We invite and honour the participation of all in every aspect of church life.

We acknowledge the challenges diversity brings and embrace them fully because we also celebrate the richness of its gifts. We pray for God’s grace to guide us as we work for equity and justice for all persons in both church and society.

## **2022 Funerals**

1. February 1, 2022 – Helen Rosie Carleton\*
2. March 9, 2022 – Dorothy Robertson\*
3. May 14, 2022 – Charles Allan Warder
4. May 21, 2022 – Jeffrey Dean Evans
5. May 22, 2022 – Franklyn Arthur Strain\*
6. May 27, 2022 – Raymond Leroy Knowlton\*
7. June 3, 2022 – Marillyn Virginia Judiesch\*
8. June 10, 2022 – Velma Sutherland
9. June 11, 2022 – Iva Wright
10. June 22, 2022 – Eileen Tena Adams
11. July 8, 2022 – Alvin Willie Peters
12. September 29, 2022 – Lynda Catherine Marshall
13. October 1, 2022 – Paul James McGregor
14. October 4, 2022 – Della May Guenther
15. October 5, 2022 – Harvey Harold Krein\*
16. October 15, 2022 – Elaine Margo Hilts
17. October 17, 2022 – Marnie Plewis\*
18. October 26, 2022 – Irene Martins
19. October 29, 2022 – Jessy Oberding
20. November 5, 2022 – Margaret Jean Heuer
21. November 25, 2022 – Vernon Frank Pribyl\*
22. December 8, 2022 – Gregory Miller
23. December 12, 2022 – Marion (Betty) Elizabeth Reaves
24. December 21, 2022 – Clifford Chan

Members \*

## **Other Members who died in 2022**

1. December 25, 2022 – Janet Musgrave
2. December 27, 2022 - Lucille Sorensen

## **2022 Baptisms**

None

## **Life Elders as of December 31, 2022**

- |                        |                      |                      |
|------------------------|----------------------|----------------------|
| 1. Jean Allen          | 16. Jim Hayes        | 31. Betty Pribyl     |
| 2. Florence Anderson   | 17. Janet Keene      | 32. Betty Roberston  |
| 3. Donna Barber        | 18. Colin King       | 33. Gerry Rya        |
| 4. Betty Bateman       | 19. Marilyn King     | 34. Gestur Sigurdson |
| 5. Wally Bateman       | 20. Colleen MacBean  | 35. Violet Sigurdson |
| 6. Ken Benson          | 21. Jean Macnab      | 36. Allan Smith      |
| 7. Lorraine Bloye      | 22. Thelma Marsh     | 37. Murray Smith     |
| 8. Ray Bunnell         | 23. Karen Messer     | 38. Pat Smith        |
| 9. Harold Casselman    | 24. Patricia Mierke  | 39. Shirley Terlson  |
| 10. Marjorie Casselman | 25. Eva Molyneux     | 40. Kae Waters       |
| 11. Glenna Cory        | 26. Christine Newton | 41. Shirley Wilson   |
| 12. Melanie Davis      | 27. Carol O'Donnell  |                      |
| 13. Sharyn Erne        | 28. Larry O'Donnell  |                      |
| 14. Val Goodfellow     | 29. Jean Pearson     |                      |
| 15. Eileen Hayes       | 30. Shirley Philp    |                      |

## **2022 Marriages**

1. May 28, 2022 – Jordan Charles Braun and Ashley Marie McCleary
2. July 23, 2022 – Duncan Lee Shaw and Halee Anne Bridgeman
3. October 22, 2022 – Bailey Anne Holmes and Brittany Ann Ekstrand
4. November 26, 2022 – Brydon Todd Campbell and Ashley Brianne Sawyer
5. December 10, 2022 – Gareth William Strydom and Leia Renee Anderson

## **2022 Members by Confirmation, Profession of Faith and Transfer of Memberships**

**Baptism/Profession of Faith - none**

**Transfer of Membership to First United Church – none**

### **Transfer of Membership from First United Church**

1. October 11, 2022 - Kaitlin Olmsted transferred to Grosvenor Park United Church, Saskatoon, SK

## **Membership Report**

Total Confirmed Membership as of Jan. 1, 2022	251
Members Received by Profession of Faith	0
Members removed by death	10
Members received by Certificate of Transfer	0
Members removed by Certificate of Transfer	1
Members removed otherwise *	1
<b>Total Confirmed Membership as of Dec. 31, 2022</b>	<b>239</b>

\* Removed at their request.

## **Staff**

Minister: Reverend Annette Taylor  
Office Manager: Patti McCleary  
Office Manager: Rhonda Lotochinski  
Choir Director: James McLauchlan  
Sunday School Coordinator: TBD  
Custodian: Michael Orola  
Pianist: Mary Anderson  
Organist: Patti McCleary

## Chair of Council

They say the only constant in life is change. This year saw us once again facing change. I was asked to be the Acting Chair as Ron Toles was dealing with health issues. We once again after nine years had to rethink our governance model, COVID 19 hampered us and in all of that we found new ways of being us in a changing world.

We began by looking at a new governance model. As our population ages fewer people were able to commit to the governance of the church. What was ultimately decided at a congregational meeting was a smaller vision and policy board, less formal action committees and house groups to look after the day to day of worship.

Charles Lotochinski took on the role of Acting Chair of Council in October. I'd like to thank Ron for his support in spite of the health issues and Charles for stepping up as I felt that it would be poor governance to continue for a 4<sup>th</sup> year as Chair.

We were able to reduce COVID 19 restrictions in the spring and finally suspend them this fall. The last three years have been a trying time for us and it is reflected in the financial shortfall this budget year. I would like to thank those of you who have hung on as we continue to be the best we can.

Looking toward the future, the board got involved with Carla Leon from Kindred Works, who presented the idea of our church connecting more with the community. What partnerships could we form in the community to promote social action? Some very good examples of this are;

- the Refugee Sponsorship Working Group and their work with community partners to raise funds to reunite the Etmeah family;
- Earthcare Partners working to green our planet with the Living Wall and meditation area;
- SaskAbilities helping out with our Loose Change Suppers; and
- Close to my heart, reaching out to the LGBTQ community by being an Affirming Congregation.

I have enjoyed my time as Chair and wish whoever becomes Chair at the AGM all the best and offer my support as I know the congregation will.

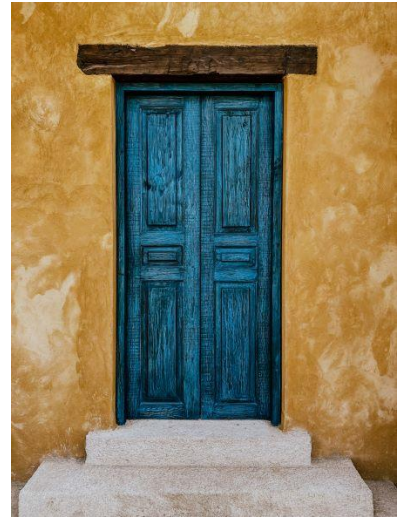
Gratefully  
Kevin Hanna  
Chair of Council



## Minister

I recently started a self-reflective journey with a resource by Joyce Rupp called *Open the Door: A Journey to the True Self*. This book invites you to open the door of your heart and to spend time each day discovering who you are and what God is calling you to be. This six-week journey will, no doubt, be a truly meaningful one for me as an individual. I also believe that the metaphor of a door is a useful way of reflecting on the life of our congregation.

In 2022, First United Church walked through a door that took us from the COVID-19 pandemic to a post-COVID world. The year began with strict protocols in place, but with booster shots and the promise of a bivalent vaccine, we moved back to in-person services eventually letting go of all restrictions on in-person events.



As our congregation carefully moved through this door, we began to explore both new and old ways of being church together including:

- in February, an online service to celebrate being an Affirming Ministry;
- in March, an Irish Stew Supper, our first in-person meal in two years;
- in June, Worship in the Park and a picnic lunch;
- in September, Welcome Back Sunday with full choir, congregational singing and an indoor potluck lunch;
- in October, the Refugee Resettlement Supper and Auction;
- in November, a Loose Change Supper, our first in nearly three years; and
- in December, hosting the Ministerial Advent Services.

We now have 50 to 75 people attending church services each Sunday and another 30 to 40 watching online. I am grateful that technology is allowing us to remain connected with those who are unable to join us in the sanctuary on Sunday morning.

I want to thank the rest of the staff, the members of our Church Council, committees and working groups for your willingness to adapt and change as we have moved through the door to post-COVID ministry. A special thank you to Kevin Hanna and Charles Lotochinski for stepping into the position of Chair of Council when Ron Toles was unable to fulfill that task. Thank you to everyone for your dedication and faithfulness to our church family and our congregation's ministry in this community and in the world.

As we look forward to 2023 and beyond, it is obvious that our congregation has more doors to move through and more change to navigate. We ended 2022 with a large deficit in our operating income and we are also faced with the reality of an aging congregation. With the need for change in mind, our Church Council created a task group last spring to come up with a new governance structure. The new model was approved at a congregational meeting on October 30th and will be implemented at our upcoming Annual Meeting.



This governance model has been designed to reduce the workload of committee chairs, to streamline decision-making and speed up the implementation of new initiatives. The house groups will help us connect with members of our wider congregation and bring more people into the life and work of the church. Finally, the focus of our new Leadership Team will be, in the words of Joyce Rupp, to help us open “the door of our heart” and lead us on “a journey to our true self.”

We are moving into a time of deep reflection on the ministry and mission of our congregation as we explore options for the future. It is both a scary and an exciting journey to be on. Opening the door of our heart means letting go of any pre-conceived ideas of who we are and trusting that the Spirit of Love will guide us to our true identity. I am looking forward to joining with you on this journey of faith and hope.

Blessings,  
Annette Taylor

Photo on first page by [Edgar](#) on [Unsplash](#)  
Photo on second page by Dmitry Zvoloskiy on [Pexels](#)

## **Office Managers**

### **Patti McCleary and Rhonda Lotochinski**

It is hard to believe that 2022 has already come and gone, time sure flies by! Thankfully, the beginning of 2022 saw most of the rentals, meetings and fundraisers return to normal activity since the Covid-19 pandemic started in March of 2020. During this period, we lost a few regular renters and gained a couple more. Most of our committees have returned to meetings at the church, while a few are still meeting over Zoom. We are grateful to be back to in person worship services. It's so nice to see everyone on Sunday mornings and sing with our choir again.

The office was very busy once again as we were able to hold a few fundraiser suppers such as the Irish stew supper in March, the Spring ham supper in May and a roast beef takeout supper in September. They were all successful and we made sure to offer take out options for those who were not able to attend in person. This was also the first year since 2019 that we were able to hold our Fowl supper. We also kept busy with weddings, funerals, other fundraising projects, plus the return of Loose Change suppers and potluck lunches.

Patti continued working full days Monday to Thursday, and Rhonda worked Monday mornings to count the offering, Tuesday mornings to fulfill all the website duties, and worked full days Thursday and Friday performing regular office duties.

Patti was the chair for the Outreach committee and Fundraising Working Group and was on the Worship & Music committee, and the Fowl Supper, Memorial, and Loose Change supper working groups. Patti also resumed playing the organ in March of 2022 for Sunday worship services. In February of 2023, Patti will have worked 20 years at First United Church. Wow, time really does fly by!

Rhonda continued to take part in running the sound system for church services, funerals and weddings. Rhonda was also a member of the Archives committee, Membership & Pastoral Care committee, Memorial committee, Fundraising Working Group, and the Loose Change working group.

We would like to thank Rev. Annette Taylor, the staff, and the Ministry & Personnel committee for their continued support and guidance.

We both greatly enjoy working at First United and always look forward to meeting everyone in the congregation as they stop by the office. It is wonderful to see how busy our church is both as a congregation and also as an outreach vehicle to those in need in Swift Current and surrounding area.

Blessings

Patti McCleary and Rhonda Lotochinski, Office Managers

## Choir Director

Hi Folks!

Welcome to 2023! We have, and continue to face, many challenges as we move forward as a church. However, every Sunday, the spirit of our community continues to shine on!

As many of you know, I was in the hospital for much of the past summer. I received many prayers and well-wishes from First United. Thank you! I am currently on kidney dialysis but I have a good treatment team and the supplies are a shared expense so I am fortunate!

Thank you, in particular, to the choir for your support this year!

With the exception of July and August, I am here for at least 14hrs/week. Most of that time has been working from home and Annette and I have recently returned to in person planning from Zoom. During this time I complete the following tasks:

- Plan and implement choir rehearsals.
- Coordinate with internal and external worship leaders. This includes assistance in choosing music that is accessible and valued by the congregation here at First.
- Select an anthem that fits with the appropriate theme of service.
- Choose and implement music for the Sunday School program.
- Maintain healthy communication with other church staff and volunteers regarding the worship service.
- Coordinate and arrange musical accompaniment of pianists', the Gospel Band or individual performers.
- Work to find opportunities for others within the church that would like to share their musical gifts.
- Meet with Worship and Music once a month to discuss worship ideas regarding the music program here at First.
- Maintain and report copyright obligations with respective holders.

I want to send a big Thank You to M&P for their continued support!

James McLauchlan BMT MTA  
Choir Director

## **Building and Property Committee**

The Building & Property Committee for 2022 consisted of Wally Bateman, Jerry Ruehs, Ken Newton, Wally Pearson, Brent Molyneux and Mae Lake.

A special thank you goes out to the following people:

Michael Orola continues to take care of the cleaning and sanitizing our building. His work is very much appreciated.

Wally Bateman keeps an eye on the heating system, in particular the boilers, and continues in his efforts to keep the sanctuary and other parts of the church operating as they should according to the various activities.

Brent Molyneux maintains the sound and video equipment. The live streaming system works well and enables members to log in to the Sunday Services.

During the year the following work was carried out:

- Smoke detectors were replaced by Melhoff Electric.
- The contract with Troy Life and Fire Safety was cancelled and Melhoff Electric will do the necessary work from now on.
- The Burnham Room and the ladies bathroom upstairs by the gym were painted.
- Len's Plumbing carried out some required maintenance on the roof top heating and cooling unit.
- Members of the committee rotate the opening and closing of the church for Sunday services.

Projects that need to be done:

- The water heater in the south Boiler room needs repair. There is no hot water.
- The committee is looking into various possibilities for changing the elevator maintenance contract.

Building and Property Committee  
Jerry Ruehs, Chair

## Faith Formation Committee

During 2022, the Faith Formation Committee remained mindful of its purpose: To invite persons of all ages and stages to explore and grow in their relationship with God as revealed through Jesus Christ, with the community of faith and with the world.

### Sunday School

The Faith Formation Committee supports, encourages, and appreciates the work of Jackie Orola-Ravino in her role as Sunday School Coordinator. Jackie personifies faith, love, and hope. (Refer to separate report)

### Book Studies

There were four Book Studies in 2022:

1. *Arab Cooking on a Prairie Homestead* by Habeeb Salloum (followed by a potluck of recipes in the book).
2. *The Education of Augie Merasty* by Augie Merasty with David Carpenter
3. *The Great Spiritual Migration* by Brian McLaren
4. *Braiding Sweetgrass* by Robin Wall Kimmerer
5. Facilitators: Colleen MacBean and Peggy Worrell

### Earthcare Partners

Environmental education, consciousness-raising, and action were inspired by the study in 2021 of the book, *A Good War: Mobilizing Canada for the Climate Emergency* by Seth Klein. A proposal by Linda Stumpf and Peggy Worrell to create a new Working Group with an environmental focus, “Earthcare Partners”, was approved by Church Council. (Refer to separate report)

### Lenten Study

“It’s Our Saga, Too” by Janice Maclean of The Prayer Bench guided the Lenten study. Facilitators: Linda Stumpf and Annette Taylor.

### Advent Study

“Navigating Mystery” by Janice Maclean of The Prayer Bench guided the Advent study. Facilitators: Mary Anderson and Annette Taylor.

Creation Station Working Group (Refer to separate report)

### Lectionary Bible Study

This group met on Wednesday mornings for a lively discussion over Zoom, led by Annette.

### Membership classes

Annette is planning to offer Membership Classes in 2023.

Friday Matinees

The following films were shown: The Father, Life off the Grid, CODA, Joseph and the Amazing Technicolor Dreamcoat, West Side Story, Dune, The Power of the Dog, Don't Look Up, Belfast, The Queen, Sans Maman, Our Father, Little Women, Last Christmas

Hosts: Dixie Green, Karen Messer, Linda Stumpf, Peggy Worrell.

Family Fun Event

Our first Family Fun Event, in collaboration with the Family Resource Centre, was successful.

The Center

Our church donated \$150.00 to The Centre (for youth). The money was used to buy pizza for one of their Friday or Saturday drop-in times

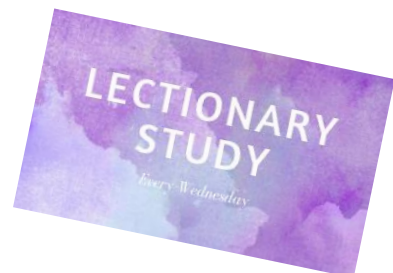
Outdoor worship service and family picnic

The Faith Formation Committee and the Worship & Music Committee jointly planned this event for June 12 at Riverdene Park.

Thank you to the many volunteers who made the ministry of the Faith Formation Committee possible.

Faithfully submitted,

Peggy Worrell (Chair), Karen Messer (Secretary), Pat Dyck-Bunkosky, Kimberly Bilanski, Mary Anderson, Jackie Orola-Ravino (Sunday School Coordinator), Rev. Annette Taylor





## Affirming Ministry Working Group

In 2022, the members of the Affirming Ministry Working Group were Stacie Noble-Wiebe (Chair), Sharon Veer, Janet Keene, Deb Fletcher, and Annette Taylor.

Highlights from 2022 included:

- Announcing and celebrating our successful vote to become an Affirming Ministry.
  - At the February 6, 2022 celebration (held via Zoom), members of the congregation took turns unveiling the symbols to be installed in the Main Entrance foyer and shared why becoming an Affirming Ministry was meaningful to them. A representative from Affirm United presented our Affirming Ministry certificate and a letter sent by the Moderator of the United Church of Canada was read aloud.
- Implementing plans to display visible signs that we are an Affirming Ministry such as:
  - Installing signage with the Affirm United symbol beside the Main Entrance doors and signage stating our Affirming Vision Statement in the Main Entrance foyer.
  - Installing a display of symbols representing a variety of marginalized groups in the Main Entrance foyer.
  - Painting the outer church stairs with the colours of the Progress Pride flag.
    - Entering a photo of the congregation on the new rainbow stairs in the Southwest Saskatchewan Pride photo contest and winning gift certificates from local restaurants that were used to share food with the congregation after the September 18, 2022 service.
  - Including our Affirming Vision Statement and the Affirm United symbol on our website, as well as the Affirm United logo on our letterhead.
- Working with Church Council and the Faith Formation Committee to designate an ongoing Affirming Ministry Working Group under Faith Formation's umbrella.
- In partnership with the Worship and Music Committee, fundraising for the purchase of a parol which was then selected and purchased by Jackie Ravino, the Sunday School Coordinator. A parol is a Filipino ornamental lantern which is displayed during the Christmas season.
- Planning and/or co-leading the following services:
  - February 6, 2022 - Affirming Ministry Celebration (as described above).
  - February 20, 2022 - SaskAbilities service with guest speakers, Jayda Watson and Kim Furey.
  - February 27, 2022 - Anti-Poverty Ministry service with guest preacher, Peter Gilmer.
  - June 26, 2022 - Pride service in conjunction with Southwest Saskatchewan Pride's Pride Week theme of Celebrating Community, Celebrating Diversity.
  - November 13, 2022 - Systemic racism service (which was rebooked from October 23, 2022 thanks to wintery weather causing a last-minute power outage at the



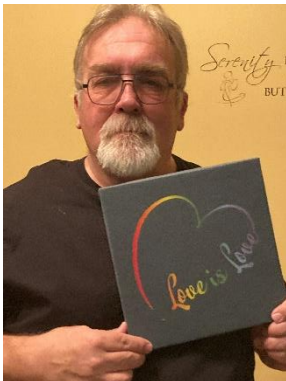
church) - co-creating the Community Learning portion with Jackie Ravino, Sunday School Coordinator.

I would like to thank Janet, Deb, Sharon, and Annette once again for their deep commitment to this working group, and for their enthusiasm and their willingness to take action in so many different ways. I also want to thank Council, staff, and the congregation for your engagement and support as we navigate this Affirming journey together.

Thank you!

Stacie Noble-Wiebe

Chair of the Affirming Ministry Working Group



## Creation Station Working Group

*If God is creator, and we are made in God's image or Imago Dei, then we are, in our essence, creators. We are, in our essence, artists. Therefore, when we open ourselves to the expression of creativity, we also open to the movement of the Divine within us. (Christine Valters Paintner and Betsy Beckman)*

The idea for a Creative Arts Space in the church was birthed in the spring of 2018 when then youth group leader, Staci Schaitel, wondered if there might be space for the group to expand their activities. Negotiations were made with the UCW Garage and Rummage Room folk for the use of the former quilting room which was used for storage except for November and December when it became the Christmas Room. We were given use of the space January through September/October. In order to make full use of the space, the room was set up as a drop in space for exploring creativity. It was named "Creation Station" and was open on Wednesdays during Garage Sale hours.

In March 2020 Creation Station officially became a working group under Faith Formation with the purpose "To encourage and enable people both in the church and wider community to explore their creativity. Often creative pursuits become spiritual practices that bring one closer to the Holy and a place of peace and centredness. "The materials in the room have been accumulated through donation. Recently The Welcome Centre donated some craft supplies they would not be needing after the move to a new location.

In April 2022 Creation Station hosted its first children's birthday party with great success. Cards were made to be sold to raise money for the United Church of Canada's Ukraine Emergency Response.

In October 2022 card-making bees were held for a card sale on November 20, 2022 with proceeds to M&S of \$306.20. Mother's Day cards were made before the COVID closure that will, hopefully, be offered for sale this year.

Folks from the Mental Health drop in about twice a month to enjoy the space. In October a Brownie group came to do Hallowe'en crafts on their meeting night. The Welcome Centre and the Pride Drop In Centre have both expressed interest in making use of the space. Of course, the Sunday School can use the space whenever they wish.

We look forward to hosting more groups and always encourage folks dropping in on Wednesday afternoons.

Respectfully submitted by Linda Stumpf, Convenor and Fran Jackson



## Earthcare Partners Working Group

- On February 13, 2022 the Faith Formation Committee called a meeting to determine the level of interest in environmental issues within the church (and possibly beyond the church).
- A group named Earthcare Partners was created, with Linda Stumpf and Peggy Worrell as Co-chairs. Its purpose is to develop ideas related to care of the earth as individuals and as a church.
- A concrete breeze wall was transformed into a “Living Wall”, a bold public statement about greening the planet. 78 pots with plants were placed in the openings in the wall.
  - Thank you to Rose Lis for her leadership and dedication.
  - Thank you to Ron and Eileen Elkington for their donation of labour and materials for the drip irrigation system.
  - Thank you to Linda and Leonard Stumpf for the blue pots.
  - Thank you to all of the donors of pots, plants, and other materials and those who participated in the planting bee.
  - Tomatoes were distributed to seniors who do not have gardens.
  - There was a “Plant Giveaway” on Welcome Back Sunday, September 11, 2022.
  - None of the \$200 budget was needed.
  - The project was recognized by the *Prairie Post*, *Broadview* magazine and *The Gardener* magazine.
  - For 2023, a new sign will be needed.
- A Zen Garden, a meditation space behind the Living Wall, was created. It’s a miniature landscape, natural, simple, with pea stone representing the sea, precisely placed rocks, a few plants, and a bench.
  - Thank you to Rose Lis for cleaning up the space.
  - Thank you to an anonymous donor for the pea stone.
  - For 2023, a new sign will be needed.
  - A mural for the north side would be lovely.
- A “Did You Know?” section with environmental tips has been added to the weekly bulletin.
- At GoGreen 2022 on September 16, 2022 First United Church was thanked along with volunteers from schools, businesses, and non-profit organizations who participated in the annual community clean-up and beautification day.
- On October, 15, 2022, Linda Stumpf and Peggy Worrell attended a workshop, “Creation Care in our Places of Prayer: Energy Retrofits and other Faith-based Climate Action”, from Regina via Zoom. Much valuable information was obtained, including a “Did-You-Know Faith Building Energy Audit Guide”. Dan Olmsted has kindly agreed to work with the Building & Property committee to complete this audit and recommend changes to make our building more energy-efficient and reduce energy costs. Available grants will be explored.

- A Vintage Fashion Show on October 16, 2022 raised awareness of the environmental impact of the garment industry. On display were quilts made from recycled clothing. Thank you to the 3rd Ave Boutique and Garage Sale Rooms for remaining open after the worship service for those who wished to tour or shop.
- Many other ideas will be pursued in 2023.
- You are invited to join Earthcare Partners, which meets monthly over Zoom.

Linda Stumpf & Peggy Worrell



## **Sunday School Working Group**

*“Children are a gift from the Lord; they are a real blessing.”*

- *Psalm 127:3*

Children grow. And as they do become taller and wiser, they remain to be a blessing to everyone. In Sunday School, it is a blessing as well to walk with families as we guide our children in their faith journey.

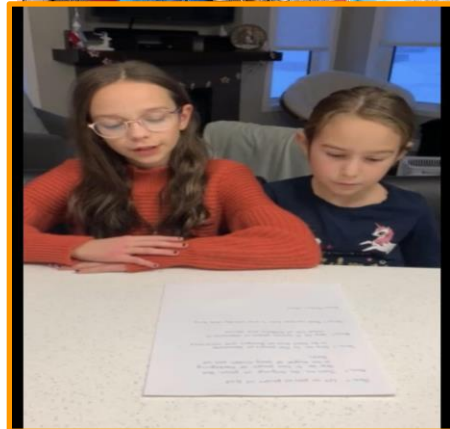
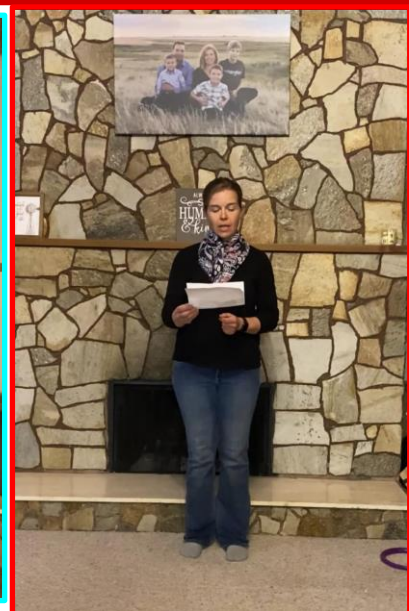
After two and a half years of online-at-home and moving on to a combined (online and in-person) mode of Sunday Schooling, we went back to having our sessions and activities fully in person in the year 2022. I was in awe to see a few of our kids have grown and are now middle schoolers and are able to assist us in facilitating our sessions with the younger ones. I am grateful to see our children recognize each other, know them by name, and have the opportunity to sing, listen to stories, share ideas, do crafts, play in the gym, and eat snacks together. They were also willing to be involved in leading our worship celebration, whether it be Children’s Sunday or the other seasons that we celebrate in the sanctuary. Sunday School parents and volunteers from the congregation have joined and supported us in making events happen such as Easter Sunday egg hunting and Kids’ Giving/Shopping day during the Christmas season, to mention a few. The joy that was visible on their faces and the expressions of happiness that we had a glimpse of on various occasions made us feel very thankful to God for the gift of these children in our midst.

The Sunday School Group will always be appreciative of the people among us who lend a helping hand and dedicate time to lead our children; the Faith Formation committee, First United Church staff, Rev. Annette Taylor, Sharyn Erne, Melanie Davis, and the countless volunteers who connected with us this year.

Maraming salamat po sa inyong lahat (thank you very much to you all)!

Jacqueline Orola Ravino  
Sunday School Coordinator

# Sunday School 2022 in Pictures



## **Membership and Pastoral Care Committee**

Purpose of this committee:

- To provide pastoral care for the Congregation
- In cooperation with the Roll Clerk, to keep current the membership roster of the church
- To actively support and work with the Minister(s) in pastoral care of the congregation

Members of this committee: Rev. Annette Taylor, Sharyn Erne (Chair), Fran Jackson, Charlotte Thingvold, Karen Fox, Rhonda Lotochinski, Deb Fletcher, and Carol Moen.

Visiting Group: Sharyn Erne, Colleen MacBean, and Diane Sarson

Accomplished for the year 2022:

- Returned to meeting in person on the second Tuesday of every month.
- Organized and completed a new photo directory for First United Church and assisted Riverview Estates with a directory for their residents.
- Assisted Rev. Annette Taylor with Care Home services and Fran Jackson made the arrangements for communion with the homes that were ready to go ahead with that. On November 4, 2022 we had communion services at the Meadows and Cypress house. Both were well attended. Other regular services were held at Prairie View Lodge, Golden West Manor, Heritage Towers, the Bentley and Willow Creek Manor. All have been well attended.
- We have returned to our Thursday morning coffee breaks in person.
- Six graduates were recognized this year at our May 15, 2022 Sunday service. Shawls were delivered to each graduate. Pictures were obtained and were put up on the PowerPoint to show during the service. The 2022 graduates were Darbie Dahlgren, Hunter Flaterud, Kadence Pavely, Macy Popick, Sasha Ries and Milan Yeo.
- This committee along with the office staff worked on getting the Historic Roll to match up with the Church database. We contacted members and adherents to see if they wish to remain on our roll or be removed.
- We are proceeding with our Pastoral Care Workshop one meeting at a time.
- Our prayer group continues to do their prayer service in their own homes at this time.
- 16 prayer shawls have been gifted this year and 1 twiddle muff.
- Our phoning and visiting list changes more often than usual. Our visitors are keeping up with the moves and changes.
- Seven members of our congregation delivered Meals on Wheels for the month of May.

I would personally like to thank everyone involved with this committee. It is a committee that reaps the rewards of seeing happiness in the faces of those people we spend time with.

Blessings

Sharyn Erne

Chairperson of Membership & Pastoral Care Committee

## **Ministry and Personnel Committee**

The Ministry & Personnel Committee members for 2022 were Mavis Jenson, Linda Thompson, Shirley Dyck, Brenda Warder (chair). Ray Friesen has resigned.

Our committee meetings have been held once per month and more often when needed. All our meetings were held by Zoom until September 2022. We are also available upon request to meet with staff or with members of the congregation with our primary role to be a constructive and supportive agency for staff members and adherents of the congregation.

We have been able to enjoy regular church services, live stream and in person.

Our committee conducted the staff annual performance reviews during October 2022 and met with Rev. Taylor as requested by her.

We are pleased that Rev. Annette Taylor has had education leave and vacation this year.

We would also like to thank the congregation for their continued support.

Respectfully submitted, Brenda Warder.



## Outreach Committee

We would like to thank our congregation once again for all the support given to the Outreach Committee in 2022. With your support, we were still able to provide aid to our neighbors locally and, through Mission and Service, care for others across Canada and around the world.

Our committee members for 2022: Patti McCleary (Chair), Rev. Annette Taylor, Lynn Anderson (Secretary), Brenna Stolhandske, Fran Jackson, and Lennie Neufeld.

Outreach Projects we worked on together were:

- Christmas in July supporting the S.W. Safe Shelter, Salvation Army and Canadian Mental Health Association
- Christmas Hampers – 13 hampers for 2022
- Level Ground Trading
- Zatoun Olive Oil
- Monthly baking and food items collected for Canadian Mental Health Association
- Canadian Foodgrains Bank
- Our local Benevolent Fund

The Outreach Committee raised money for Mission & Service through:

- M & S Lenten campaign
- Greeting card, Baking and Preserves sale
- Special M & S service on Sept. 18, 2022



Other sources of funds for Mission & Service were:

- Care Home Services Offerings
- Offerings designated to M & S (including Pre-Authorized Remittance)
- \$5,000 donated from Planned Giving Fund

From all these sources, a total of \$18,814.20 was sent to Mission and Service in 2022.

The United Church of Canada sent out an appeal to help the people from Ukraine and \$1520 was collected from our congregation plus another \$347.80 was collected from greeting card sales for a total of \$1867.80. We also sent a cheque for \$3,000 to St. Andrew's College, which was collected from our congregation. Another \$5,000 was sent to Camp Shagabec, \$2,740 was collected from our congregation and \$2,260 was sent from the Planned Giving Fund.

Guided by the Spirit, this congregation is compassionate and caring, reaching out locally and globally to enhance the lives of all. Our committee could not reach out to others without the generosity and support of our church family. Thank you!

Blessings from the Outreach Committee

## **Loose Change Supper Working Group**

We are grateful to the Sask Abilités who send us volunteers to help set up for the suppers.

We had one supper on November 29, 2022. It was quite well attended and we asked the guests to wear masks as they went through the food lines. We will probably continue this in the New Year. Income for the November supper was \$812.75 and expenses were \$337.39 for a net income of \$475.36 which was donated to Outreach for the Christmas Hamper project.

It was decided to have the suppers every other month this year (January, March and May) and re-evaluate this in the Fall of 2023.

Committee Members: Diane Minogue, Rhonda Lotochinski, Patti McCleary, Judy Corbett, Maxine Olmsted, Sharyn Erne and Janet Keene.

Submitted by Janet Keene





## Refugee Sponsorship Working Group

Greetings from the members of the Refugee Sponsorship Working Group.

First, to recap - our dedicated and energetic working group members include Rev. Annette Taylor, Amy Popick, Marie Andrews, Marilyn Durant, Catherine Christie, Heba Anouz, Janet Keene, Faris Sadden, and Maxine Olmsted. We owe Amy a huge thank you for chairing this committee for the past ten years. She has stepped away as chair but remains on the committee. We are so grateful to have her continuing expertise and experience. The committee is now rotating chairs for each meeting.

During the past year there were still some questions as to which of Heba's family members would be sponsored. We have now finalized our sponsorship goal to include Heba's parents, her sister, her sister's husband, and their two dependent children, the eldest of whom will likely reach the age of 18 before the family is finally able to enter Canada. This means that the 18-year-old will have a separate adult profile requiring an additional amount of funding. All family members are currently residing in Egypt while they wait for their application to be processed. In the spring of 2022, we submitted the necessary paperwork to the United Church of Canada. Our thanks to Anika Henderson for her extensive help and expertise with the paperwork! The papers were reviewed by United Church staff in the fall, and after some revisions all forms were approved as of December of 2022. The United Church of Canada now submits this paperwork to the federal government.

We began 2022 with \$62,776.00 in funds, which was incredible given that this amount was raised in less than a year. Since then, several factors have prompted us once again to reconsider our fundraising goal. These include increases in the cost of living, the likelihood of a separate adult profile for the eldest child, and ongoing health concerns for some family members. We have therefore revised our fundraising goal to \$95,000.00. **The fantastic news is that, as of January of 2023, we have raised \$86,881.00!!** The fundraising supper that we had to cancel in 2021 was held in October of 2022. The response was fantastic! In addition, we had two successful days at Market Square during the summer, and continued to receive donations from local churches, congregation members and community members.

Fundraising efforts and completing the necessary paperwork were our dominant goals last year. We have now begun the process of collecting donations of household items for the families. The committee has prepared lists of items that are needed and will be publicizing these in the near future. Our thanks to the Swift Current Masonic Lodge, whose members agreed to provide us with free storage in their lodge building. We will continue to create and find various opportunities for raising funds and awareness beyond our congregation for this sponsorship.

Our sincere thanks to each and every person who has continued to support this initiative, whether monetarily or in any other way! We couldn't do this without you!

With Gratitude and Joy,  
The Refugee Sponsorship Working Group

## **Living Skies Regional Council**

### **Call and Vision of The United Church of Canada**

The United Church of Canada is a community of hope, a vibrant and vital church with both purpose and vision. We live in a time of rapid change in religious life, great inequities between peoples, and collective harm to our earth community. As church, we have been complicit in injustice. And yet we have this hope. We believe we continue to be called to witness in love and justice to the liberating, healing Christ risen in this place and time. Together, we strive towards repentance, repair, and right relations with all peoples and the planet. Our call and vision statement speaks to how we boldly embody the Christian story in this time, filled with the certainty of resurrection and hope for new life.

Living purposefully into this call and vision anticipates becoming what Dr. Martin Luther King Jr. and others called the Beloved Community—the ever inbreaking, ever transforming, ever reconciling realm of God, realized in our time.

#### **Call**

The United Church of Canada Call reflects the core of our purpose, sharing who we seek to be in “such a time as this” (Esther 4:14).

Deep Spirituality/Bold Discipleship/Daring Justice

#### **Vision**

The United Church of Canada vision reflects what the church aspires to be over a 5- to 10-year span.

*Called by God, as disciples of Jesus, The United Church of Canada seeks to be a bold, connected, evolving church of diverse, courageous, hope-filled communities united in deep spirituality, inspiring worship, and daring justice.*

After a sustained consultation process, these interlinked statements were adopted by the Annual Meeting of General Council 43 on October 23, 2021.

The Call and Vision is commended to regional councils, communities of faith, and United Church incorporated ministries for engagement and discernment for their ministry. It is shared with the broader community as a pledge of identity and hope. These statements also provide purpose and direction within the 2022–2025 Strategic Plan of the General Council Office."

*-taken from the [UCC website](#)*

Living Skies is one of 16 Regional Councils that came into being on January 1, 2019 as part of The United Church of Canada's restructuring. Living Skies Regional Council exists within the provincial boundaries of Saskatchewan. It has about 170 Pastoral Charges and about 230 congregational communities of faith. It also contains other communities of faith including 5 outreach ministries and 5 camps. We also have St. Andrew's College within our Regional Council and a special relationship with several ecumenical partners.

I think Annette can attest to the fact that we have received much support from both Executive Chair, Tricia Gerhardt and Pastoral Relations Minister, Tracey Murton as we have dealt with the affects of the pandemic on all of us. Darrell Reine is the new Executive Chair.

### **Regional Gathering 2021**

Now that we are no longer attending quarterly presbytery meetings, it is more difficult to formulate a report. The one meeting we attended in 2021 was the annual meeting. Living Skies Regional Council held its third Regional Gathering over 3 days in June on Zoom. There were 170 attendees. Videos of the entire meeting, and of songs, services of worship and celebration, and honouring of retirees, are available through the UCC YouTube playlist.

Opening worship had an anti-racist theme and on the second day of the meeting there was a learning time on anti-racism. Deb Anderson-Pratt offered a Woman's Warrior Song that was written to give strength to face difficult times.

The report from General Council asked for prayers for the new General Secretary, Michael Blair, as he responds to so many issues facing the church at this difficult time.

Development of a strategic plan for The United Church of Canada is moving forward with input from town halls and consultations. The plan will address the question: What does the church need to do today to be relevant, and meaningful, effective and faithful 10 years from now?

Vicki Nelson, Stewardship Animator for Western Canada, was introduced. Vicki reminded the delegates to use Generosity Matters and Minutes for Mission stories and resources, and that, "living a life full of gratitude takes practice and daily effort, but it is so worth it!"

As follow-up to the last Annual Meeting, the Regional Council is discontinuing assessments for additional Community Ministry funding. A universal Community Ministries Fund has been created to distribute funding equitably to the Community Ministries. The fund will be administered by the Grants Committee

Two proposals were passed: one to establish a justice committee and one to issue a formal request to the Saskatchewan Health Authority, the Minister of Health, and the Premier of SK for reinstatement of funding for Spiritual Care.

During the closing worship there was a time of covenanting with communities of faith including First United, candles were lit in memory of former members who had died and 7 churches that had closed. Retirees were recognized and 2 new ministers were celebrated.

## 2022

There was no Regional Council Annual Meeting in 2022. On June 9th a Tea Party was held by Zoom to celebrate honourees, recognize those who had died and churches that had closed (8) and say goodbye to outgoing chairperson, Tricia Gerhard. 40 persons attended. There were 11 retirees, 4 of whom spoke. One had served 50 years, another 39 years and another over 40 years. There were 3 ordinands: Youngjin Park, Aurora Espenant, and Kent Mohn and one Designated Lay Minister, Jim Wolf who were ordained/recognized at services where they were serving. In person gatherings are planned for 2023 in Prince Albert and 2024 in Humbolt.

The 44th General Council (2022) was a virtual meeting in three sessions: listening in February, discussion in the spring, and decision-making in the summer. 15 Commissioners to General Council were approved by Living Skies Region including Michelle Rowe from Maple Creek. Carmen Lansdown, first Indigenous female moderator of the United Church of Canada was elected. Information about the meeting can be found on the United Church website [United Church of Canada](#).

For answers to your questions, the best person to call is Bev Diebert [bdiebert@united-church.ca](mailto:bdiebert@united-church.ca) 306-704-0181. She also puts out a bi-weekly newsletter, The Regional Rambler, which members of council receive by email. Let Bev know if you would like to receive it. There is a face book page [\(8\) Living Skies Region of the UCC | Facebook](#) and the website is <https://livingskiesrc.ca>.

Your delegates: Linda Stumpf and Colleen MacBean

## Stewardship Committee

Greetings and Blessings to all. Another year, another report to write. This past year I was not actually the Chair of Stewardship, only continuing in the role of Treasurer. Starting in 2023 though, I have agreed to resume the chair of the Stewardship committee for another term. I can't seem to shake it off!

2022 was a year of ups and downs. Having passed through the years of COVID we found ourselves confronted by sharply rising inflation, particularly in regards to utilities and insurance. Combined with less than anticipated local givings, we are again in a deficit position. To compound this, 2022 was the first year I can recall where we were unable to beat our budgeted deficit. We passed a budget with a \$31,094 deficit and actually had a loss of \$50,290.

It is hard to say if this is a trend or a one-time event, but obviously missing our target by 60% is cause for alarm. While the Easter giving was well above expectations, both Christmas and Thanksgiving fell considerably short. Most concerning was that local giving was only 80% of target. This is partly due to some of our larger givers giving less than we anticipated.

There were some brighter spots. Fundraisers were well above expectations, as was Rental income. Even with the pressure of skyrocketing utility costs, Building and Property were able to keep things within \$100 of their budget. Of course, this came at the expense of reduced spending on building maintenance.

Going forward, we all realize that we need to make some major changes. Deficits of this magnitude are not sustainable. With the change in the governance model perhaps we will be able to focus more intently on our path forward. As chair of Stewardship, I will be part of that leadership team. If you have ideas or input you would like me to bring forward, please reach out and let me know. Any change will have to involve everyone in the church.

This year Wally Derkach and Gayleen Turner will be leaving the Stewardship team. They have been valued and appreciated members of Stewardship and we are sad to see them leave. Unfortunately, that only leaves myself and Brenda Gruetzner. So, if you are interested in participating, please consider the Stewardship committee as a possible way you can participate in the running of our church.

I would like to thank the entire Stewardship team for their support and work through a very challenging 2022 and look forward to continuing our work through 2023.

Blessings



Charles Lotochinski  
Treasurer

## Fundraising Working Group

In March of 2021, the Fundraising Working Group was formed and is accountable to the Stewardship Committee. Our working group concentrates on ideas that are expected to raise a minimum of \$1000. Members of the congregation are encouraged to submit their ideas.

The objectives of the Fundraising Working Group are:

1. Fundraising
2. Building community within the congregation

In 2022, our working group looked at different fundraising projects but due to Covid 19 concerns, some projects were again tabled until 2023. We had a very successful fundraising year, with all proceeds going to the church's General Operating Fund.

Event	Date	Details	Income	Expenses	Net Income
<b>\$22 for 2022</b>	Jun 1 to Jun 15/22	29 people donated	\$2,756.00	\$0.00	\$2,756.00
<b>Winter Wonderland Online Auction</b>	Nov 25 to Dec 1/22	54 auctions items donated 177 bids	\$2,040.00	\$0.00	\$2,040.00
<b>Irish Stew</b> <i>Seats in gym &amp; takeout meals</i>	Mar 17/22	141 meals sold <ul style="list-style-type: none"> <li>• 79 in gym</li> <li>• 62 take outs</li> </ul>	\$2,302.00	\$0.00 *paid by UCW	\$2,302.00
<b>Spring Ham Supper</b> <i>Seats in gym &amp; take out meals</i>	May 7/22	143 meals sold <ul style="list-style-type: none"> <li>• 60 in gym</li> <li>• 83 take outs</li> </ul>	\$3,205.00	\$278.04	\$2,926.96
<b>Fall Roast Beef Supper</b> <i>Takeout only</i>	Sept 24/22	150 takeout meals sold	\$3,282.00	\$684.77	\$2,597.23
<b>Fowl Supper</b>	Nov 6/22	300 meals sold - 191 in gym (2 settings) - 109 take outs	\$6,668.00	\$995.58	\$5,672.42
			<b>TOTAL INCOME</b>	<b>TOTAL EXPENSES</b>	<b>NET INCOME</b>
			<b>\$20,253.00</b>	<b>\$1,958.39</b>	<b>\$18,294.61</b>

Fundraising Working Group project

Social Convenors/Fundraising Working Group project

Fowl Supper Working Group project

Thank you to everyone who made these fundraisers such a huge success!

Respectfully submitted,

Patti McCleary (Chair), Fran Jackson, Rhonda Lotochinski, Ila Wilms and Eileen Elkington



## **Memorial Working Group**

Members: Ray Bunnell (Chair), Patti McCleary, Sharyn Erne, Rhonda Lotochinski, and Donna Barber.

The Memorial Working Group looks after money which has been donated to First United Church, given by those wishing to remember loved ones who have passed on. The money is used by our church to purchase items which enhance our church.

In 2022, a total of \$250 was donated to the Memorial fund.

The balance in the Memorial Fund as of December 31, 2022 was \$16,404.19.

Our working group had one request in 2022 and that was to purchase a second earset for the sanctuary. This request was approved and we paid \$439.31 out of the Memorial fund.

Ray Bunnell  
Chair of Memorial

## Nominations Working Group

<b>LEADERSHIP TEAM</b>		<b>Year/ 1<sup>st</sup> Term</b>	<b>Year/ 2<sup>nd</sup> Term</b>
Chairperson	Peggy Worrell	1/3	
Vice Chairperson	Not required for 2023/24		
Secretary	Pat Dyck Bunkosky	3/3	
Treasurer	Charles Lotochinski	2/3	
Member-at-Large	Kevin Hanna	1/3	
Member-at-Large	Colleen MacBean	1/3	
Member-at-Large	Marlene Reidle	1/3	
Member-at-Large	Kim Bilanski	1/3	
Ministry Personnel	Rev. Annette Taylor		
<p><b>CHURCH COMMITTEES</b></p> <ul style="list-style-type: none"> <li>• The Minister is an ex-officio member of all committees, except Ministry and Personnel, Search and Nominations</li> <li>• Corresponding Members contribute to the work of the Committee but are not expected to attend meetings</li> </ul>			
<b>REQUIRED COMMITTEES</b>			
<b>MINISTRY &amp; PERSONNEL</b>	<b>Chair + 3-5 members</b>	<b>Year / 1<sup>st</sup> Term</b>	<b>Year/ 2<sup>nd</sup> Term</b>
Chairperson	Brenda Warder	2/3	
Secretary	Linda Thompson	2/3	
	Mavis Jenson	3/3	
	Ann Wiebe	1/3	
<b>TRUSTEES</b>	<b>5 lay members, including Chair</b>	<b>Year / 1<sup>st</sup> Term</b>	<b>Year/ 2<sup>nd</sup> Term</b>
Chairperson	Marlene Reidle	3/3	
	Joanne Feil	2/3	
	Shirley Wilson	3/3	2/3
	Karen Bender	3/3	2/3
	Darliss Tallman	3/3	

<b>OTHER COMMITTEES</b>			
<b>BUILDING &amp; PROPERTY COMMITTEE</b>	<b>Chair + 4-6 members</b>	<b>Year/ 1<sup>st</sup> Term</b>	<b>Year/ 2<sup>nd</sup> Term</b>
Chairperson	???		
Secretary	Mae Lake	2/3	
	Jim Declare	3/3	
	Wally Pearson	3/3	
	Ken Newton	3/3	
	Brent Molyneux	3/3	
Corresponding member	Wendell Andrews		
Corresponding member	Jerry Ruehs		
Corresponding member	Wally Bateman		
<b>FAITH FORMATION COMMITTEE</b>	<b>Chair + 3-5 members</b>	<b>Year/ 1<sup>st</sup> Term</b>	<b>Year/2<sup>nd</sup> Term</b>
Chairperson	Mary Anderson	2/3	
Secretary	Karen Messer	3/3	
	Pat Dyck Bunkosky	3/3	1/3
	Kim Bilanski	2/3	
	Joevy Perrera		
Sunday School Coordinator	???		
<b>PASTORAL CARE &amp; MEMBERSHIP COMMITTEE</b>	<b>Chair + Roll Clerk + 4-5 members</b>	<b>Year/ 1<sup>st</sup> Term</b>	<b>Year/ 2<sup>nd</sup> Term</b>
Chairperson	Sharyn Erne	3/3	
	Charlotte Thingvold	2/3	
	Deb Fletcher	3/3	2/3
	Fran Jackson	2/3	
	Rose Lis	1/3	
Corresponding member	Colleen MacBean		
Corresponding member	Olive Waker		
Corresponding member	Diane Sarson		
Roll Clerk- ex-officio	Patti McCleary/Rhonda Lotochinski		
<b>OUTREACH COMMITTEE</b>	<b>Chair + 4-6 members</b>	<b>Year/ 1<sup>st</sup> Term</b>	<b>Year/ 2<sup>nd</sup> Term</b>
Chairperson	???		
Secretary	Lynn Anderson	3/3	2/3
	Brenna Stolhandske	3/3	3/3
	Fran Jackson	3/3	
	Jennifer Bingham	1/3	
	Carisma Toles	1/3	

<b>STEWARDSHIP COMMITTEE</b>	<b>Chair + 3-5 members</b>	<b>Year/ 1<sup>st</sup> Term</b>	<b>Year/ 2<sup>nd</sup> Term</b>
Chairperson	Charles Lotochinski	2/3	
	Brenda Gruetzner	2/3	
	Eileen Elkington	1/3	
<b>NOMINATIONS COMMITTEE</b>	<b>Chair + 3-5 members</b>		
Chairperson	???		
Co-chair	Eileen Elkington	2/3	
<b>WORSHIP &amp; MUSIC COMMITTEE</b>	<b>Chair + 4-6 members + Choir Director</b>	<b>Year/ 1<sup>st</sup> Term</b>	<b>Year/ 2<sup>nd</sup> Term</b>
Chairperson	???		
Choir Director	James McLauchlan		
Secretary	Barbara Foster	3/3	1/3
	Patti McCleary	3/3	1/3
	Faye Jordan	3/3	
	Diane Sarson	1/3	
<b>LIVING SKIES REGIONAL REPRESENTATIVES</b>	<b>3 Representatives</b>	<b>Year / 1<sup>st</sup> Term</b>	<b>Year/ 2<sup>nd</sup> Term</b>
	Linda Stumpf	3/3	2/3
	Colleen MacBean	3/3	1/3
	Dixie Green	1/3	
<b>HOUSE GROUP COORDINATOR</b>			
	Marie Andrews		

<b>OTHER GROUPS IN THE CHURCH</b> <i>(not elected at Annual General Meeting)</i>			
<b>UNITED CHURCH WOMEN</b>			
President	Brenda Warder		
Past President	Shirley Wilson		
Vice President	???		
Secretary	Shirley Terlson		
Relief Secretary	???		
Treasurer	Shirley Terlson		
<b>U.C.W. INTEREST GROUPS</b>			
<b>Social &amp; Funeral Lunch</b>			
Chair	Judy Killaby		
	Rose Lis		
	Kathy Bolton		
	Donna Barber		
	Janet Keene		
	Chris Newton		
	Sharon Pollock		
	Pat Palmer		
	Sharyn Erne (attend meetings only)		
<b>Garage Sales</b>			
Contact Person	Donna Barber		
<b>3<sup>rd</sup> Ave Boutique</b>			
Contact Person	Judy Corbett		
	Donna Schwartz		
<b>Kitchen Supplies</b>			
Contact Person	Kathy Bolton		

<b>OTHER INTEREST GROUPS</b>			
<b>Fowl Supper Interest Group</b>			
Contact Person	Janet Keene		
	Shirley Terlson		
	Diane Sarson		
	Patti McCleary		
	Maxine Olmsted		

	Pat Palmer		
<b>Affirming Ministry Interest Group</b>			
Contact person	Stacie Noble-Wiebe		
	Sharon Veer		
	Deb Fletcher		
	Annette Taylor		
<b>Loose Change Supper Interest Group</b>			
Contact person	Janet Keene		
	Rhonda Lotochinski		
	Maxine Olmsted		
	Patti McCleary		
	Diane Minogue		
	Judy Corbett		
	Shirley Mussell – prep only		
	Elma Engel – prep only		
	Sandie Ritchie – prep only		
	Kimberley Furey – SK Abilities contact		
<b>Archives Interest Group</b>			
Contact Person	Jean Pearson		
	Rhonda Lotochinski		
	Fran Jackson		
<b>Fundraising Interest Group</b>			
Contact Person	Patti McCleary		
	Fran Jackson		
	Rhonda Lotochinski		
	Ila Wilms		
	Eileen Elkington		
<b>Refugee Sponsorship Interest Group</b>			
Contact person-rotating	Amy Popick		
	Janet Keene		
	Maxine Olmsted		
	Marilyn Durant		
	Marie Andrews		
	Annette Taylor		
Community member	Heba Etmeh		
Community member	Faris Sadden		

<b>Decorations Interest Group</b>			
Contact person	Ila Wilms		
	Amanda Polsfut		
	Diane Minogue		
	Mavis Jensen		
<b>Prayer Shawl Interest Group</b>			
Contact Person	Sharyn Erne		
<b>Creation Station Interest Group</b>			
Contact Person	Linda Stumpf		
<b>Prayer Interest Group</b>			
Contact Person	Fran Jackson		
<b>Thursday Morning Coffee Group</b>			
Contact Person	Charlotte Thingvold		
<b>Earth Care Partners</b>			
Contact Person	Linda Stumpf		
	Peggy Worrell		
<b>HOUSE GROUP # 1</b>			
Leader	Maxine Olmsted		
<b>HOUSE GROUP # 2</b>			
Leader	Eileen Elkington		
<b>HOUSE GROUP # 3</b>			
Leader	Judy Killaby		
<b>HOUSE GROUP # 4</b>			
Leader	Pat Palmer		
<b>HOUSE GROUP # 5</b>			
Leader	Linda Stumpf		
<b>HOUSE GROUP # 6</b>			
Leader	Jacqueline Orola Ravino		

<b>HOUSE GROUP # 7</b>			
Leader	Heather Warder		
<b>HOUSE GROUP # 8</b>			
Leader	Janet Strain		
<b>HOUSE GROUP # 9</b>			
Leader	Joan Williamson		
<b>HOUSE GROUP # 10</b>			
Leader	???		



## **Trustees**

The Trustee committee members for 2022 were Marlene Reidle (Chair), Shirley Wilson, Darliss Tallman, Karen Bender and Joanne Feil. Rev. Annette Taylor is also a member of the committee in an ex officio capacity. The Board of Trustees held 3 zoom meetings during the year - January 18, February 15, and November 17.

Signing authorization policy on the term deposits at the Innovation Credit Union, is set that any 2 of the 3 authorized members acting together must sign all documents. The 3 authorized members in 2022 were Marlene Reidle, Karen Bender, and Shirley Wilson.

During 2022, two term deposits held with the Innovation Credit Union came due and were renewed.

At the direction of Church Council, The Board of Trustees looked at increasing the risk of the investment portfolio to potentially increase investment returns. Council concluded that they would prefer to develop a planning and direction strategy for the Church before any additional action is taken to change the investment policy.

Marlene Reidle  
Trustee Committee Chair

## **Worship and Music Committee**

As of March 2022 our committee members were: Rev. Annette Taylor (minister), James McLauchlan (choir director), Nicole Rewerts (chairperson), Barbara Foster (secretary), Faye Jordan, Jessie Hanna, Laurel Howell and Patti McCleary.

At the beginning of the year, Church Council made the decision to go back to Sunday Zoom services because of the rising risk of the Omicron COVID-19 variant. On March 6, 2022 we went back to in person worship services with some restrictions and only 7 people in the choir loft. And in September choir practices began and we opened the choir loft to all choir members. No other COVID-19 restrictions remain for choir or congregation.

We are continuing to live-stream our Sunday services using Boxcast. We are blessed to offer this valuable service for those who are unable to attend in person so they still feel connected to our church family. In the spring we had about 35-45 people watching each Sunday service from home and this fall, with more people attending in person, that number dropped to 30-35 each week.

This year our committee decided to move from weekly half hour radio broadcasts to a monthly one-hour broadcast. We approved 10 months of radio services (excluding July and August) at \$130 for each service. We invited members of the congregation to sponsor each broadcast. This was a successful project as we budgeted \$600 income and received \$940.

The committee recognized the importance of having a back-up earset for our minister and asked the Memorial Working Group for up to \$500 to cover the cost. The earset was purchased this fall and is now available for use when needed.

One of the highlights of the year was our worship service and potluck lunch at South Side Park on June 12<sup>th</sup>. We were pleased to share the planning and costs with the Faith Formation Committee. Thankfully it was a beautiful day with approximately 40 people attending.

We were thrilled to resume our Sunday potluck lunches on Welcome Sunday, September 11, 2022 and they will continue in 2023. Thanks to the Social Convenors for making these lunches possible.

We had approximately 110 people attend our Christmas Eve service and a Christmas message was pre-recorded and emailed to the congregation instead of an in-person Christmas day service.

In the spring, Nicole Rewerts moved away from the city and thus resigned as the chair of our committee. Since that time, we have been rotating the chair for our meetings. We thank Nicole for her time and dedication as she served as our chairperson.

Also, a big thank you to Mary Anderson who, along with her regular tasks, took over leading the choir for a few weeks in September while James was away on sick leave.

Submitted by  
The Worship and Music Committee

## Choir

During 2022-23, we have been fortunate to be able to return to the choir loft! It has been wonderful to see and hear More Voices on Sunday!

I also want to thank Mary Anderson and Sharon Veer for being such dependable and solid musicians to work with this year. You're both real gems to work with!

Thank you to Jackie for your continued work with the kids! We are very fortunate to have you and your family here!

Thank you to Patti and Rhonda for your support this year!

I also need to say a special thank-you to Rev. Annette for being great to work with. We are very fortunate to have you here!

Respectfully submitted,

James McLauchlan MTA  
Choir Director



## UCW

The General UCW welcomed in 2022 with less Covid restrictions, and things have started to returned to normal.

The Social Conveners are gradually getting busier with Funeral lunches, lunches, suppers etc. Thanks to Chairperson Judy Killaby and her dedicated group of ladies that look after this.

The Garage Sales have been going very well, thanks to Donna Barber and her staff for all the work they put into this. As well the Boutique Sales have been doing very well, and we would like to thank Judy Corbett and Donna Schwartz and their staff for all the work they do to organize the Boutique room.

The Plants in the Church look lovely and so well taken care of, and we would like to thank Norma Hain for her work on this project.

### Events held in 2022

- 1) The Social Conveners co-ordinated and held a “Valentine Treat Tray” sale that was very well received by members of the Church.
- 2) World Day of Prayer was held on March 4, 2022 via Zoom.
- 3) A Plant & Muffin sale was held on May 25, 2022.
- 4) A UCW 60<sup>th</sup> Anniversary Church Service was presented by our UCW on June 5, 2022.
- 5) Swift Current UCW hosted “Camp Shagabec Women’s Day at Camp” on June 13, 2022. There were 44 women from around the Southwest in attendance. The spring managers, Jackson and Ethan helped us out all day and then gave a presentation and a video on Camp Shagabec. Our day consisted of registration, muffins and coffee, church service with communion, lunch, walk, browse the history books from different towns, rock painting, camp report, short meeting with a decision to donate \$200.00 to Camp Shagabec and most important that we go back next year with ladies from Maple Creek and Frontier planning the day. We ended with a memorial service.
- 6) The UCW 60<sup>th</sup> Anniversary was held in Sydney NS, July 11-15, 2022. Norma Hain & Pat Dyck Bunkosky attended and were pleased and honoured to represent our UCW. There was a presentation of approximately \$103,294.00 which had been raised over the past five years from UCW’s across Canada for the “Women for Change in Zambia”. The next 5-year special project will be dedicated to “The Healing Fund-Women and Children.
- 7) The UCW purchased two 8ft tables for use in the Church.
- 8) A special meeting was held on September 11, 2022 regarding the annual Fowl Supper. After some discussion it was decided that “The UCW will, from 2022 forward turn the annual Fowl Supper completely (including the finances) over to the Church”.
- 9) The Christmas Tea, Bake Sale & Fashion Show was held on Friday December 2, 2022.

Please note, that any female member of our Church is considered a UCW Member, and are welcome to come to the General UCW meetings, we would be pleased to have you join us.

The General UCW needs a Vice President. Anyone interested could speak to our President.

Respectfully submitted by:  
Shirley Terlson, U.C.W Secretary/Treasurer



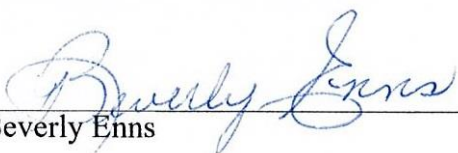
**UCW Audit Statement**

Statement of Income and Expenses - January 1 to December 31, 2022

**Balance Forward** – January 1, 2022 = \$21,068.86

<b>INCOME</b>		<b>EXPENSES</b>	
Bakeless Bake Sale	560.00	Catering	952.88
Catering	3,815.41	Local Church	8,000.00
Boutique Sales	6,708.70	Donations	1,100.00
Garage Sales	10,633.20	M & S	0.00
Muffin & Plant Sale	854.00	Kitchen Supplies	352.11
Christmas Tea	1,146.10	Christmas Tea	66.74
Donations	802.70	Office Supplies	100.00
Rental	180.00	Delegates	500.00
Misc	4.00	Misc	494.33
Float	1,175.00	Float	1,175.00
Interest	25.72	Kitchen Repairs/Upkeep	0.00
<b>TOTAL</b>	<b>25,904.83</b>	<b>TOTAL</b>	<b>12,741.06</b>
<b>CREDIT 2022 - \$13,163.77</b>			
<b><u>BALANCE SHEET – December 31, 2022</u></b>			
Bank Balance	34,232.63		
Term Deposit (1)	8,916.84		(Yearly Interest - \$125.45)
Term Deposit (2)	3,024.33		(Yearly Interest - \$16.54)
Equity Acct	88.14		
<b>NET WORTH</b>	<b>46,261.94</b>		
<p>I have reviewed the financial records for the First United Church Women (UCW), for the calendar year of 2022.                      I believe they accurately present a summary of all activities.</p>			

**Dated: January 17, 2023**

  
 Beverly Enns



# First United Church Operating Fund

## First United Church Balance Sheet As of 31 December 2022

31 Dec 22

**ASSETS**

**Current Assets**

**Chequing/Savings**

**Cash Account**

900 - Petty Cash 43.15

**Total Cash Account** 43.15

**General Operating Accounts**

**1100 High Interest Accounts**

1102 - General Operating 87,303.70

1105 - B & P - 830510791122 46,705.17

**Total 1100 High Interest Accounts** 134,008.87

**1000 - Chequing Account - 100202354785**

1002 - General Operating 45,383.30

1015 - Senior Choir 1,699.36

1045 - Worship Circle-Chinook Pres. 8,174.54

1050 - Memorial Fund 16,404.19

1075 - Refugee Sponsorship 86,881.75

**Total 1000 - Chequing Account -  
100202354785** 158,543.14

**Total General Operating Accounts** 292,552.01

**Total Chequing/Savings** 292,595.16

**Accounts Receivable**

**Accounts Receivable**

1401 - GST Receivable 651.74

**Total Accounts Receivable** 651.74

**Total Accounts Receivable** 651.74

**Other Current Assets**

1011 - Credit Union Member Rewards 8,759.12

**Total Other Current Assets** 8,759.12

**Total Current Assets** 302,006.02

**Other**

**Assets**

**Long Term Investments**

1016 - Term #1-04/20/23 - 830511584914 80,000.00

1017 - Term #2-04/22/23 - 830512487612 50,000.00

1018 - Term #3-04/22/23 - 830512487596 80,000.00

1019 - Term #4-04/22/24 - 830511584948 80,000.00

1023 - ChoirTerm-04/21/23-830512361635	2,142.41
1024 - ChoirTerm-04/21/23-830512361643	2,169.81
1025 - ChoirTerm-04/21/23-830512361668	2,220.58
1026 - ChoirTerm-04/21/23-830512361684	<u>2,251.02</u>
Total Long Term Investments	<u>298,783.82</u>
Total Other Assets	<u>298,783.82</u>
<b>TOTAL ASSETS</b>	<b><u>600,789.84</u></b>
<b>LIABILITIES &amp; EQUITY</b>	
<b>Equity</b>	
3000 - Opening Bal Equity	142,053.80
3001 - Equity Adjustments	-29,613.55
3100 - Retained Earnings	513,819.98
Net Income	<u>-25,470.39</u>
Total Equity	<u>600,789.84</u>
<b>TOTAL LIABILITIES &amp; EQUITY</b>	<b><u>600,789.84</u></b>

**First United Church**  
**Profit & Loss Budget vs. Actual**  
 January through December 2022

	<u>Jan - Dec 22</u>	<u>Budget</u>	<u>% of Budget</u>
<b>Ordinary Income/Expense</b>			
<b>Income</b>			
<b>Administration Income</b>			
4001 · Local	92,525.53	133,800.00	69.15%
4001-1 · Local - offering not receipted	8,183.23	8,200.00	99.8%
4001-2 · Local - PAR	78,066.00	78,000.00	100.09%
4002 · Loose Offering	492.18	1,000.00	49.22%
4007-1 · Christmas - Loose	185.00		
4007 · Christmas Offering	8,390.00	9,000.00	93.22%
4008 · Easter Offering	6,040.00	4,500.00	134.22%
4009-1 · St. Andrew's - unreceipted	3,000.00		
4025 · UCW Unit Envelope Givings	250.00		
4050 · UCW - Local	8,000.00	8,000.00	100.0%
4051 · Broadview	350.00	400.00	87.5%
4060 · Thanksgiving	4,005.00	5,500.00	72.82%
4070 · Church Calendars	110.00	50.00	220.0%
4080 · Affirming Ministry	260.00		
4090 · GST Rebates	1,398.52	1,500.00	93.24%
4091 · Co-op Equity	0.00	50.00	0.0%
4092 · Credit Union Equity	685.80	750.00	91.44%
<b>Total Administration Income</b>	<u>211,941.26</u>	<u>250,750.00</u>	<u>84.52%</u>
<b>Faith Formation Income</b>			
4101 · Sunday School	6.70	100.00	6.7%
4103 · Sunday School Xmas Shopping Day	158.20		
4110 · Adult Education	640.20		
4111 · Earthcare Partners	288.60		
4160 · Creative Art	174.70	50.00	349.4%
<b>Total Faith Formation Income</b>	<u>1,268.40</u>	<u>150.00</u>	<u>845.6%</u>
<b>Fundraiser Income</b>			
4600 · Fundraising Income	0.00	12,500.00	0.0%
4601 · Roast Beef Takeout Supper	3,282.00		
4605 · Spring Supper	3,205.00		
4613 · Christmas Online Auction	2,040.00		
4614 · Fowl Supper	6,668.00		
4620 · Irish Stew Supper	2,302.00		
4627 · \$22 for 2022	<u>2,756.00</u>		



<b>Total Fundraiser Income</b>	20,253.00	12,500.00	162.02%
<b>Interest Income</b>			
4801 · General Operating Chequing	137.37	100.00	137.37%
4807 · General Operating High Interest	637.91	100.00	637.91%
4809 · Term Deposits Interest	5,198.12	7,500.00	69.31%
4820 · B & P High Interest Account	299.96	100.00	299.96%
<b>Total Interest Income</b>	6,273.36	7,800.00	80.43%
<b>Outreach Income</b>			
4201 · Canadian Food Grains Bank	550.00	400.00	137.5%
4201-1 · CFGB - unreceipted	5,000.00		
4203 · Christmas in July	1,425.00	1,000.00	142.5%
4205 · Christmas Hampers	5,034.64	2,500.00	201.39%
4206 · Fair Trade Sales	981.82	500.00	196.36%
4211 · Camp Shagabec	2,220.00		
4211-1 · Camp Shagabec - unreceipted	500.00		
4212 · Camp Shagabec - loose	20.00		
4214 · Ukrainian Appeal	1,520.00		
4215 · Cards for Ukraine	347.80		
4261 · Benevolent Fund	100.00		
4262 · Benevolent Fund Gift-In-Kind	150.00		
4271 · Loose Change Supper Income	812.75	4,000.00	20.32%
<b>Total Outreach Income</b>	18,662.01	8,400.00	222.17%
<b>Building &amp; Property Income</b>			
4301 · Room Rentals	20,497.50	15,000.00	136.65%
4310 · Weddings	1,500.00	350.00	428.57%
4315 · Funerals	2,450.00	1,300.00	188.46%
<b>Total Building &amp; Property Income</b>	24,447.50	16,650.00	146.83%
<b>Sundry Income</b>			
4910 · Wages - Weddings	1,600.00	350.00	457.14%
4915 · Wages - funerals	1,700.00	1,300.00	130.77%
<b>Total Sundry Income</b>	3,300.00	1,650.00	200.0%
<b>Worship &amp; Music Income</b>			
4510 · Radio	940.00	600.00	156.67%
4512 · Decorations	250.00		
4520 · Melodies of Xmas	0.00	2,500.00	0.0%
<b>Total Worship &amp; Music Income</b>	1,190.00	3,100.00	38.39%
<b>Total Income</b>	287,335.53	301,000.00	95.46%
<b>Expense</b>			
<b>Administration Expense</b>			
5001 · Accounting & Audit	200.00	200.00	100.0%
5003 · Bank Charges	361.50	350.00	103.29%
5005 · Computer	320.00	2,000.00	16.0%

<b>5010 - Office Supplies</b>	1,107.36	1,000.00	110.74%
<b>5012 - Postage</b>	694.64	700.00	99.23%
<b>5014 - Broadview Subscriptions</b>	425.00	450.00	94.44%
<b>5025 - UCW Unit Envelope Givings</b>	250.00		
<b>5030 - St. Andrew's College</b>	3,000.00		
<b>5040 - Web Page</b>	547.75	550.00	99.59%
<b>5050 - General Council Allocation</b>	12,867.00	12,867.00	100.0%
<b>5070 - Church Calendars</b>	136.16	100.00	136.16%
<b>5075 - Council Expenses</b>	0.00	500.00	0.0%
<b>5080 - Affirming Ministry Expenses</b>	586.51	800.00	73.31%
<b>5085 - Copier Usage</b>	2,400.08	1,500.00	160.01%
<b>5090 - GST</b>	324.28	500.00	64.86%
<b>5091 - PST</b>	296.33	250.00	118.53%
<b>Total Administration Expense</b>	<b>23,516.61</b>	<b>21,767.00</b>	<b>108.04%</b>
<b>Building &amp; Property Expense</b>			
<b>5101 - Equipment Leases</b>	5,638.63	5,500.00	102.52%
<b>5102 - Equipment Purchases</b>	0.00	1,000.00	0.0%
<b>5104 - Alarm System Monitor Fee</b>	419.40	425.00	98.68%
<b>5106 - Property Insurance</b>	18,938.00	18,938.00	100.0%
<b>5108 - Licences</b>	537.00	550.00	97.64%
<b>5112 - Janitorial Supplies</b>	1,187.02	1,200.00	98.92%
<b>5114 - Organ Maintenance</b>	0.00	1,000.00	0.0%
<b>5116 - Snow Removal</b>	3,890.00	2,000.00	194.5%
<b>5118 - Lawn Care</b>	1,940.00	2,000.00	97.0%
<b>5130 - Electricity</b>	7,002.86	6,000.00	116.71%
<b>5131 - Recycling fee</b>	48.00	50.00	96.0%
<b>5132 - Gas &amp; Heat</b>	17,554.68	12,500.00	140.44%
<b>5134 - Water &amp; Sewer</b>	1,930.23	2,500.00	77.21%
<b>5136 - Waste Removal</b>	1,021.86	850.00	120.22%
<b>5140 - Telephone</b>	1,881.87	2,000.00	94.09%
<b>5150 - Building Repair &amp; Maintenance</b>	2,411.16	6,000.00	40.19%
<b>5152 - Equipment Repair &amp; maintenance</b>	2,825.17	3,000.00	94.17%
<b>5156 - Furniture</b>	0.00	1,000.00	0.0%
<b>5175 - Parking Lot</b>	0.00	500.00	0.0%
<b>5190 - GST</b>	2,231.39	1,900.00	117.44%
<b>5191 - PST</b>	2,297.94	2,750.00	83.56%
<b>Total Building &amp; Property Expense</b>	<b>71,755.21</b>	<b>71,663.00</b>	<b>100.13%</b>
<b>Faith Formation Expense</b>			
<b>5210 - Sunday School</b>	360.89	500.00	72.18%
<b>5225 - Children/Youth Library Books</b>	0.00	100.00	0.0%
<b>5230 - Youth Group</b>	150.00	200.00	75.0%
<b>5235 - Adult Education</b>	438.95	400.00	109.74%

5236 - Earthcare Partners Expenses	297.99	200.00	149.0%
5240 - Vacation Bible School	70.00	150.00	46.67%
5260 - Creative Art	73.35	200.00	36.68%
5290 - GST	72.14		
5291 - PST	22.59		
<b>Total Faith Formation Expense</b>	<b>1,485.91</b>	<b>1,750.00</b>	<b>84.91%</b>
<b>Fundraising Expense</b>			
5400 - Fundraising Expenses	0.00	500.00	0.0%
5401 - Roast Beef Takeout Supper Exp.	658.80		
5405 - Spring Supper Expenses	278.04		
5414 - Fowl Supper Expenses	953.00		
5490 - GST	31.16		
5491 - PST	37.39		
<b>Total Fundraising Expense</b>	<b>1,958.39</b>	<b>500.00</b>	<b>391.68%</b>
<b>Membership &amp; Pastoral Care</b>			
5305 - Baptismal Supplies	0.00	100.00	0.0%
5320 - Communion	0.00	50.00	0.0%
5330 - Confirmation	0.00	100.00	0.0%
5370 - Educational Events	59.92	100.00	59.92%
5390 - GST	3.00	15.00	20.0%
<b>Total Membership &amp; Pastoral Care</b>	<b>62.92</b>	<b>365.00</b>	<b>17.24%</b>
<b>Ministry &amp; Personnel Expense</b>			
<b>5500 - Salaries</b>			
5501 - Minister			
55011 - Salary	72,773.04	72,773.00	100.0%
55013 - Travel Expense	135.61	500.00	27.12%
55014 - Telephone	360.00	360.00	100.0%
55015 - Continuing Education	435.37	1,493.00	29.16%
<b>Total 5501 - Minister</b>	<b>73,704.02</b>	<b>75,126.00</b>	<b>98.11%</b>
5505 - Office Manager	47,353.42	47,505.00	99.68%
5508 - Pianist	6,013.03	6,373.00	94.35%
5510 - Organist	1,724.40	3,104.00	55.55%
5512 - Choir Director	19,246.08	19,247.00	100.0%
5513 - Wedding Staff & Expenses	1,600.00	350.00	457.14%
5514 - Funeral Staff	1,700.00	1,300.00	130.77%
5515 - Sunday School Coordinator	7,544.00	7,728.00	97.62%
5518 - Janitor	14,086.80	14,087.00	100.0%
5525 - Staff Recognition	190.42	300.00	63.47%
5540 - Staff Training & Development	0.00	2,000.00	0.0%
<b>Total 5500 - Salaries</b>	<b>173,162.17</b>	<b>177,120.00</b>	<b>97.77%</b>
<b>5550 - Payroll Expense</b>			
5550-1 - CPP - Company	7,313.32	7,300.00	100.18%

5550-12 · Workers Compensation	254.61	275.00	92.59%
5550-14 · Employer Indemnity	101.88	120.00	84.9%
5550-2 · EI - Company	3,118.72	3,100.00	100.6%
5550-4 · Church Pension	13,658.01	14,000.00	97.56%
5550-6 · Group Health Plan	11,791.36	10,150.00	116.17%
5550-8 · Restorative Care	2,048.68	2,100.00	97.56%
5585 · Payroll Charges	473.36	350.00	135.25%
<b>Total 5550 · Payroll Expense</b>	<b>38,759.94</b>	<b>37,395.00</b>	<b>103.65%</b>
5590 · GST	23.64		
5591 · PST	28.37		
<b>Total Ministry &amp; Personnel Expense</b>	<b>211,974.12</b>	<b>214,515.00</b>	<b>98.82%</b>
<b>Outreach Expense</b>			
5600 · Committee Expense	0.00	250.00	0.0%
5601 · Canadian Food Grains Bank	5,550.00	400.00	1,387.5%
5603 · Christmas in July	1,425.00	1,000.00	142.5%
5605 · Christmas Hampers	5,134.64	2,500.00	205.39%
5606 · Fair Trade Sales	981.82	500.00	196.36%
5611 · Camp Shagabec	2,740.00		
5614 · Ukrainian Appeal expense	1,867.80		
5661 · Benevolent Fund	1,000.00	1,000.00	100.0%
5662 · Benevolent Fund Gift-In-Kind	150.00		
5671 · Loose Change Supper Expenses	337.39	2,000.00	16.87%
5672 · Loose Change Supper - hampers	475.36	1,500.00	31.69%
5690 · GST	9.26		
5691 · PST	11.12		
<b>Total Outreach Expense</b>	<b>19,682.39</b>	<b>9,150.00</b>	<b>215.11%</b>
<b>Sundry Expense</b>			
5806 · Living Skies Regional Council	0.00	1,000.00	0.0%
5820 · Swift Current Ministerial	650.00	625.00	104.0%
<b>Total Sundry Expense</b>	<b>650.00</b>	<b>1,625.00</b>	<b>40.0%</b>
<b>Worship &amp; Music Expense</b>			
5904 · Senior Choir Music	0.00	200.00	0.0%
5908 · Radio Broadcasts	1,255.00	1,200.00	104.58%
5910 · Pulpit Supply	1,052.07	2,500.00	42.08%
5912 · Decorations	385.97	200.00	192.99%
5914 · Worship Supplies	58.75	300.00	19.58%
5930 · Advertising	118.36	160.00	73.98%
5932 · Licence & Copyrite	337.00	400.00	84.25%
5940 · Melodies of Xmas	0.00	2,500.00	0.0%
5950 · Video/Audio Equipment/Supplies	1,704.91	1,800.00	94.72%
5955 · Sound System Operator	1,550.00	1,300.00	119.23%
5990 · GST	71.40	150.00	47.6%

5991 - PST	6.71	50.00	13.42%
<b>Total Worship &amp; Music Expense</b>	<b>6,540.17</b>	<b>10,760.00</b>	<b>60.78%</b>
<b>Total Expense</b>	<b>337,625.72</b>	<b>332,095.00</b>	<b>101.67%</b>
<b>Net Ordinary Income</b>	<b>-50,290.19</b>	<b>-31,095.00</b>	<b>161.73%</b>
<b>Other Income/Expense</b>			
<b>Other Income</b>			
<b>M &amp; S Income</b>			
6000 - M & S Special Service	903.00	1,000.00	90.3%
6002 - Care Home Offering	203.15	200.00	101.58%
6004 - PAR - Designated to M & S	6,018.00	6,000.00	100.3%
6005 - Greeting Cards/Cookies	804.20	500.00	160.84%
6006 - Offerings Designated to M & S	4,221.75	4,500.00	93.82%
6008 - M & S jar	45.10	100.00	45.1%
6010 - Lenten Pigs	1,400.00	2,000.00	70.0%
6011 - Other M & S Fundraisers	219.00	700.00	31.29%
<b>Total M &amp; S Income</b>	<b>13,814.20</b>	<b>15,000.00</b>	<b>92.1%</b>
<b>Other Income</b>			
6100 - Memorial Fund Income	250.00		
6101 - Refugee Sponsorship	1,990.00		
6108 - Refugee Sponsorship - Chuffed	700.00		
6109 - Refugee Fundraisers	2,755.76		
6112 - Refugee-Oct. 21/22 auction	8,865.00		
6113 - Refugee-Oct. 21/22 donations	8,895.00		
6114 - Refugee-Oct. 21/22 ticket sales	3,150.00		
6115 - Pizza Hut Donation	880.00		
6116 - Senior Choir Term Interest	142.21		
6140 - Building & Property - PAR	1,080.00		
6141 - Building Repair	100.00		
<b>Total Other Income</b>	<b>28,807.97</b>		
<b>Total Other Income</b>	<b>42,622.17</b>	<b>15,000.00</b>	<b>284.15%</b>
<b>Other Expense</b>			
<b>M &amp; S National Expense</b>			
7000 - M & S Special Service	903.00	1,000.00	90.3%
7002 - Care Home Services Offering	203.15	200.00	101.58%
7004 - PAR - Designated to M & S	6,018.00	6,000.00	100.3%
7005 - Greeting Cards/Cookies	804.20	500.00	160.84%
7006 - Offering Designated to M & S	4,221.75	4,500.00	93.82%
7008 - M & S Jar	45.10	100.00	45.1%
7010 - M & S - Lenten Pig	1,400.00	2,000.00	70.0%
7011 - Other Fundraisers	219.00	700.00	31.29%
<b>Total M &amp; S National Expense</b>	<b>13,814.20</b>	<b>15,000.00</b>	<b>92.1%</b>
<b>Other Expense</b>			

7200 · Memorial Expense	414.44		
7201 · Refugee Sponsorship Expenses	633.45		
7203 · Refugee Supper/Auction Expenses	2,466.66		
7245 · Worship Circle-Chinook Pres.	418.00		
7290 · GST	30.75		
7291 · PST	24.87		
<b>Total Other Expense</b>	<u>3,988.17</u>		
<b>Total Other Expense</b>	<u>17,802.37</u>	<u>15,000.00</u>	<u>118.68%</u>
<b>Net Other Income</b>	<u>24,819.80</u>	<u>0.00</u>	<u>100.0%</u>
<b>Net Income</b>	<u><b>-25,470.39</b></u>	<u><b>-31,095.00</b></u>	<u><b>81.91%</b></u>

# First United Church Planned Giving Funds

## Balance Sheet

As of 31 December 2022

	<u>31 Dec 22</u>
<b>ASSETS</b>	
<b>Current Assets</b>	
<b>Chequing/Savings</b>	
Available Interest	18,267.93
Chequing Account	1,308.05
High Interest Account	<u>24,834.21</u>
<b>Total Chequing/Savings</b>	<u>44,410.19</u>
<b>Total Current Assets</b>	44,410.19
<b>Other Assets</b>	
<b>Investments</b>	
Term - 01/20/23 - 830511146615	60,000.00
Term - 09/16/23 - 830513351213	60,000.00
Term - 01/22/24 - 830511146599	60,000.00
Term - 01/19/25 - 830511146524	60,000.00
Term - 05/16/26 - 400902354785	28,308.83
Term - 07/18/23 - 408702354785	<u>6,447.30</u>
<b>Total Investments</b>	274,756.13
<b>Member Equity</b>	<u>734.48</u>
<b>Total Other Assets</b>	<u>275,490.61</u>
<b>TOTAL ASSETS</b>	<u><b>319,900.80</b></u>
<b>LIABILITIES &amp; EQUITY</b>	
<b>Equity</b>	
<b>Opening Bal Equity</b>	
Equity Adjustments	<u>21,250.58</u>
<b>Total Opening Bal Equity</b>	21,250.58
Retained Earnings	299,905.45
Net Income	<u>-1,255.23</u>
<b>Total Equity</b>	<u>319,900.80</u>
<b>TOTAL LIABILITIES &amp; EQUITY</b>	<u><b>319,900.80</b></u>

**LossFirst United Church Planned Giving Funds**  
**Profit & Loss**  
 January through December 2021

	<b>Jan - Dec 22</b>
<b>Income</b>	
Interest	6,004.77
<b>Total Income</b>	6,004.77
<b>Expense</b>	
Camp Shagabec	2,260.00
UCC - Mission & Service Fund	5,000.00
<b>Total Expense</b>	7,260.00
<b>Net Income</b>	<b>-1,255.23</b>

A planned gift is a gift made from the accumulated assets of the donor rather than regular income. This may include bequest from an estate or gifts of property such as real estate, insurance or money.

The purpose of the Planned Giving Fund is to build a financial reserve for future years when our congregation may experience difficulties meeting its financial commitments.

The fund is intended to be separate and distinct from all other Church funds.

When a donor designates a specific purpose for a gift, such gifts may be exempt from the Planned Giving Fund.

There will be no disbursement of principal from this account unless approved by a Congregational meeting. Interest or capital gains earned may be spent annually.

In the event that earnings in any year are greater than expenditures, the earnings will remain in the account and be available for future years. However, unused earnings may be deemed to be principal if directed by a Congregational meeting.

Disbursements may be used to:

- Enable members or adherents to grow in faith through courses, training or conferences
- Award scholarships or grants for the purpose of attending theological or music training
- Make capital improvements or major building maintenance
- Undertake outreach into community programs and projects of the United Church of Canada
- Initiate other expenditures as approved by a Congregational meeting



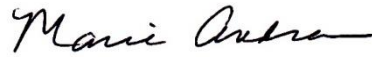
## Reviewer Report

The purpose of our review is to determine that monies donated or paid to First United Church have been deposited to the bank and properly recorded. First United Church has a procedure in place wherein two people receive and count the weekly donations. The Office Manager has been authorized to pay invoices for supplies or maintenance that are a regular occurrence, however each committee reviews large or special expenses. In addition, payments to individuals must be authorized by a committee chairperson through a cheque requisition form.

With the above checks and balances in place and after reviewing the records, we are confident the financial statements present a valid summary of operations at First United Church during the 2022 calendar year.



Betty Bateman



Marie Andrews

## 2022 Budget Proposal

Stewardship is pleased to present the proposed 2023 budget. We have worked with all the committees and council to prepare this year's budget. We thank everyone involved for their hard work and guidance in this task.

2022 was a difficult year financially. Not only did we have a budgeted deficit, but we exceeded that deficit by 60%. This was a combination of lower than expected local giving as well as unexpected dramatic inflationary pressures.

### Income Highlights

- We have lowered our local giving estimates by \$20,000 approximately 10%
- Fundraisers have been increased by \$7,500
- We will see some increase in interest income due to reinvesting in higher yeild GIC
- We expect an increase of \$5,750 in rental income
- Overall, even with the decrease in local giving, our income expectations are higher than last year

### Expenses Highlights

- Administration is slightly higher, mostly due to copier usage
- Building and property sees a larger increase due to insurance and utility increases
- Staff costs have risen over \$6,000, dependant on the Cost of Living increase

This budget is projecting a deficit amount of \$44,630.

Again, our largest expense is in staffing. We all greatly appreciate and value our staff. This year council will consider a 3.4% cost of living increase for all staff.

Otherwise the budget and the budget process itself is much the same as previous years. Council is actively looking at new ways to fund our church and it will be a focus in the next and upcoming years. We are looking forward to the new governance model as a way to focus on this task

Sincerely



Charles Lotochinski  
Chair of Stewardship

## First United Church 2023 Budget – Short Form

SHORT FORM - 2023 General Budget						
	2019 Actual	2020 Actual	2021 Actual	2022 Budget	2022 Actual	2023 Budget
Income						
Regular givings for operations	208,384	217,739	196,971	221,000	179,267	201,000
Christmas, Easter, and Thanksgiving givings	21,683	12,090	20,935	19,000	18,620	19,500
Other givings (donation receiptable)	8,493	4,552	7,075	7,600	20,346	12,175
Fundraising/Fees/Sunday School	22,962	28,202	22,282	17,000	24,747	27,200
Givings from UCW for operations	20,945	30,980	8,370	8,000	8,250	16,000
Rentals and Other Income	29,392	57,492	49,777	20,600	29,832	26,350
Interest Income	10,961	8,245	8,139	7,800	6,273	10,925
<b>Total Income</b>	<b>322,820</b>	<b>359,300</b>	<b>313,549</b>	<b>301,000</b>	<b>287,336</b>	<b>313,150</b>
Expenses						
Administration	33,571	32,168	26,628	23,892	26,125	26,837
Building and Property						
Building Upkeep	22,136	8,492	10,662	10,075	5,624	12,075
Property Upkeep	3,950	3,987	4,005	4,500	5,830	5,000
Equipment and GST/PST	11,863	9,761	15,523	17,150	14,875	18,100
Utilities	21,524	21,622	20,018	21,000	26,488	24,200
Insurance	13,731	15,025	15,482	18,938	18,938	21,653
<b>Subtotal B&amp;P</b>	<b>73,204</b>	<b>58,885</b>	<b>65,689</b>	<b>71,663</b>	<b>71,755</b>	<b>81,028</b>
Faith Formation	3,626	1,217	1,536	1,750	1,486	1,750
Membership and Pastoral Care	0	120	151	365	63	365
Worship and Music	10,373	8,096	9,825	8,260	6,540	7,960
Outreach (fundraising expenses)	2,906	674	0	2,250	358	1,750
Charitable Givings						
M&S National (Historical)	17,000	7,000	7,000	0	0	0
Directly to Charities	8,702	845	2,943	4,400	12,565	11,500
Hampers, Benevolent fund	4,214	5,058	5,080	5,000	6,760	6,000
<b>Subtotal Charitable Givings</b>	<b>29,916</b>	<b>12,903</b>	<b>15,023</b>	<b>9,400</b>	<b>19,325</b>	<b>17,500</b>
Ministry and Personnel						
Minister	68,661	68,949	71,825	75,126	73,704	75,697
Office Managers	41,152	40,082	42,737	47,505	47,353	49,249
Music Staff	28,036	24,372	24,359	28,723	26,984	29,697
Janitor, Communications, Funeral	23,972	15,664	14,149	15,737	17,387	16,214
Children Programming Staff	15,614	7,097	7,253	7,728	7,544	7,988
General staff and payroll expenses	33,912	31,507	34,497	39,695	39,002	41,745
<b>Subtotal Ministry and Personnel</b>	<b>211,347</b>	<b>187,671</b>	<b>194,820</b>	<b>214,514</b>	<b>211,974</b>	<b>220,590</b>
<b>Total Ordinary Expenses</b>	<b>364,943</b>	<b>301,734</b>	<b>313,672</b>	<b>332,094</b>	<b>337,626</b>	<b>357,780</b>
<b>Net Ordinary Income</b>	<b>-42,123</b>	<b>57,566</b>	<b>-123</b>	<b>-31,094</b>	<b>-50,290</b>	<b>-44,630</b>

## First United Church 2023 Budget - Detailed

2023 General Budget	2019 Actual	2020 Actual	2021 Actual	2022 Budget	2022 Actual	% Budget	2023 Budget	Change in Budget from 2022
<b>Total Income</b>	<b>322,820</b>	<b>359,300</b>	<b>313,549</b>	<b>301,000</b>	<b>287,336</b>	<b>95.5%</b>	<b>313,150</b>	<b>12,150</b>
<b>Total Expenses</b>	<b>364,943</b>	<b>301,734</b>	<b>313,672</b>	<b>332,094</b>	<b>337,626</b>	<b>101.7%</b>	<b>357,780</b>	<b>25,686</b>
<b>Net Ordinary Income or Loss</b>	<b>-42,123</b>	<b>57,566</b>	<b>-123</b>	<b>-31,094</b>	<b>-50,290</b>	<b>161.7%</b>	<b>-44,630</b>	<b>-13,536</b>
<b>INCOME</b>								
<b>Administration Income</b>								
4001 - Local	206,238	217,288	196,674	220,000	178,775	81.3%	<b>200,000</b>	-20,000
4002 - Loose Offering	2,146	451	297	1,000	492	49.2%	<b>1,000</b>	
4007 - Christmas Offering	11,211	7,105	8,740	9,000	8,575	95.3%	<b>9,000</b>	
4008 - Easter Offering	4,197	3,535	4,700	4,500	6,040	134.2%	<b>5,000</b>	500
4009-1 - St. Andrews Unreceipted					3,000			
4025 - UCW Envelope Giving's	945	980	235		250		<b>0</b>	
4026 - UCW Special Fundraisers			3,135					
4050 - UCW Local	20,000	30,000	5,000	8,000	8,000	100.0%	<b>16,000</b>	8,000
4051 - Broadview Magazine	475	400	405	400	350	87.5%	<b>400</b>	
4060 - Thanksgiving	6,275	1,450	7,495	5,500	4,005	72.8%	<b>5,500</b>	
4070 - Church Calendars	20	7	56	50	110	220.0%	<b>50</b>	
4075 - Presbytery Rebate								
4080 - Affirming Ministry					260			
4086 - Photocopies								
4090 - GST Rebates	1,721	1,252	1,357	1,500	1,399	93.2%	<b>1,500</b>	
4091 - Co-op Equity	25	24		50		0.0%	<b>50</b>	
4092 - Credit Union Equity	851	674	522	750	686	91.4%	<b>750</b>	
<b>Total Administration Income</b>	<b>254,104</b>	<b>263,166</b>	<b>228,616</b>	<b>250,750</b>	<b>211,941</b>	<b>84.5%</b>	<b>239,250</b>	<b>-11,500</b>

<b>2023 General Budget</b>	<b>2019 Actual</b>	<b>2020 Actual</b>	<b>2021 Actual</b>	<b>2022 Budget</b>	<b>2022 Actual</b>	<b>% Budget</b>	<b>2023 Budget</b>	<b>Change in Budget from 2022</b>
<b>Faith Formation Income</b>								
4101 - Sunday School	41	159	4	100	7	6.7%	75	-25
4102 - Youth Group	17							
4103 - Sunday School Shopping Day	179		48		158			
41022 - Fundraising	1,867							
4106 - Youth Group Retreat								
4125 - Books								
4110 - Adult Education		794	819		640		200	200
4111 - Earthcare Partners					289			
4160 - Creative Art	253	31		50	175	349.4%	50	
4180 - Fowl Supper Coat Check								
<b>Total Faith Formation Income</b>	<b>2,357</b>	<b>983</b>	<b>870</b>	<b>150</b>	<b>1,268</b>	<b>845.6%</b>	<b>325</b>	<b>175</b>
<b>Fundraisers Income</b>								
4600 - General Fundraisers	8,176	22,975	18,102	12,500	20,253	162.0%	20,000	7,500
<b>Total Fundraisers Income</b>	<b>8,176</b>	<b>22,975</b>	<b>18,102</b>	<b>12,500</b>	<b>20,253</b>	<b>162.0%</b>	<b>20,000</b>	<b>7,500</b>
<b>Interest Income</b>								
4801 - General Operating Chequing	63	135	112	100	137	137.4%	125	25
4807 - General Operating High Interest	478	72	107	100	638	637.9%	500	400
4809 - Term Deposit Interest	10,014	7,904	7,876	7,500	5,198	69.3%	10,000	2,500
4820 - B&P Savings Account Interest	406	134	44	100	300	300.0%	300	200
<b>Total Interest Income</b>	<b>10,961</b>	<b>8,245</b>	<b>8,139</b>	<b>7,800</b>	<b>6,273</b>	<b>80.4%</b>	<b>10,925</b>	<b>3,125</b>
<b>Membership and Pastoral Care Income</b>								
4701 - Prayer Shawl Donations								
<b>Total Membership and Pastoral Care</b>	<b>0</b>	<b>0</b>	<b>0</b>	<b>0</b>	<b>0</b>		<b>0</b>	

2023 General Budget	2019 Actual	2020 Actual	2021 Actual	2022 Budget	2022 Actual	% Budget	2023 Budget	Change in Budget from 2022
<b>Outreach Income</b>								
4201 - Canada Food Grains Bank	400	400	450	400	5,550	1387.5%	500	100
4203 - Christmas in July	960	275	1,625	1,000	1,425	142.5%	1,500	500
4204 - Rohingya Appeal								
4205 - Christmas Hampers	1,780	3,444	4,080	2,500	5,035	201.4%	3,500	1,000
4206 - Fair Trade Sales	870	174	719	500	982	196.4%	500	
4211 - Canmp Shagabec			150		2,740		2,500	2,500
4214 - Ukrainian Appeal					1,520			
4215 - Cards for Ukraine					348			
4216 - Outreach Fundraiser Supper	1,930						2,000	2,000
4217 - Outreach Fundraiser Auction	1,767						1,500	1,500
4218 - Outreach Fundraiser Donations	765						500	500
4261 - Benevolent Fund					250			
4271 - Loose Change Supper Income	5,774	1,296		4,000	813	20.3%	3,000	-1,000
4275 - M & S Allocation - General Oper.	2,700	2,700	2,900	0			0	
<b>Total Outreach Income</b>	<b>16,946</b>	<b>8,289</b>	<b>9,924</b>	<b>8,400</b>	<b>18,662</b>	<b>222.2%</b>	<b>15,500</b>	<b>7,100</b>
<b>Rentals &amp; Sales Income</b>								
4301 - Room Rentals	15,639	6,433	9,993	15,000	20,498	136.7%	20,000	5,000
4310 - Weddings	400	400	100	350	1,500	428.6%	400	50
4315 - Funerals	5,180	1,050	700	1,300	2,450	188.5%	2,000	700
4330 - Miscellaneous	244							
<b>Total Rentals &amp; Sales Income</b>	<b>21,463</b>	<b>7,883</b>	<b>10,793</b>	<b>16,650</b>	<b>24,448</b>	<b>146.8%</b>	<b>22,400</b>	<b>5,750</b>
<b>Sundry Income</b>								
4910 - Wages Weddings	250	375		350	1,600	457.1%	350	
4915 - Wages Funerals	4,750	675	600	1,300	1,700	130.8%	1,300	
4945 - Payroll Reimbursement	332	4,438						
4955 - WCB Surplus Distribution								
4970 - Miscellaneous (COVID 19 Subsidies etc.)		42,171	36,505					
<b>Total Sundry Income</b>	<b>5,332</b>	<b>47,660</b>	<b>37,105</b>	<b>1,650</b>	<b>3,300</b>	<b>200.0%</b>	<b>1,650</b>	
<b>Worship &amp; Music Income</b>								
4510 - Radio Broadcast Income	1,471			600	940	156.7%	600	
4512 - Decorations					250			
4520 - Melodies of Xmas	2,010	100		2,500		0.0%	2,500	
<b>Total Worship &amp; Music Income</b>	<b>3,481</b>	<b>100</b>	<b>0</b>	<b>3,100</b>	<b>1,190</b>	<b>38.4%</b>	<b>3,100</b>	
<b>Total Income</b>	<b>322,820</b>	<b>359,300</b>	<b>313,549</b>	<b>301,000</b>	<b>287,336</b>	<b>95.5%</b>	<b>313,150</b>	<b>12,150</b>

<b>2023 General Budget</b>	<b>2019 Actual</b>	<b>2020 Actual</b>	<b>2021 Actual</b>	<b>2022 Budget</b>	<b>2022 Actual</b>	<b>% Budget</b>	<b>2023 Budget</b>	<b>Change in Budget from 2022</b>
<b>EXPENSES</b>								
<b>Administration Expenses</b>								
5001 - Accounting & Audit	200	200	200	200	200	100.0%	200	
5003 - Bank Charges	333	341	354	350	362	103.3%	350	
5005 - Computer		270	619	2,000	320	16.0%	2,000	
5010 - Office Supplies	1,709	1,002	1,085	1,000	1,107	110.7%	1,000	
5012 - Postage	458	791	644	700	695	99.2%	700	
5014 - Broadview Subscriptions	525	425	450	450	425	94.4%	450	
5025 - UCW Unit Envelope Giving's	945	980	235		250			
5026 - UCW Special Fundraisers			3,135					
5030 - St. Andrew's College					3,000			
5040 - Web Page		803	20	550	548	99.6%	550	
5050 - General Council Allocation	15,852	16,326	16,496	12,867	12,867	100.0%	13,237	370
5051 - Regional Council Allocation		3,265						
5055 - Flowers								
5070 - Church Calendars	51	31	75	100	136	136.2%	100	
5075 - Council Expenses	37		222	500		0.0%	500	
5080 - Affirming Ministry			100	800	587	73.3%	800	
5085 - Copier Usage	3,594	1,431	1,517	1,500	2,400	160.0%	2,250	750
5090 - GST	3,442	2,503	179	500	324	64.9%	500	
5091 - PST	4,584	2,759	166	250	296	118.5%	300	50
<b>Total Administration Expenses</b>	<b>31,730</b>	<b>31,127</b>	<b>25,497</b>	<b>21,767</b>	<b>23,517</b>	<b>108.0%</b>	<b>22,937</b>	<b>1,170</b>

<b>2023 General Budget</b>	<b>2019 Actual</b>	<b>2020 Actual</b>	<b>2021 Actual</b>	<b>2022 Budget</b>	<b>2022 Actual</b>	<b>% Budget</b>	<b>2023 Budget</b>	<b>Change in Budget from 2022</b>
<b>Building &amp; Property Expenses</b>								
5101 - Equipment Leases	5,362	5,692	5,471	5,500	5,639	102.5%	<b>5,500</b>	
5102 - Equipment Purchases	970			1,000		0.0%	<b>1,000</b>	
5104 - Alarm System Monitor Fee	419	419	419	425	419	98.7%	<b>425</b>	
5105 - Janitorial Service								
5106 - Property Insurance	13,731	15,025	15,482	18,938	18,938	100.0%	<b>21,653</b>	2,715
5108 - Licenses	520	520	537	550	537	97.6%	<b>550</b>	
5112 - Janitorial Supplies	1,243	845	655	1,200	1,187	98.9%	<b>1,200</b>	
5114 - Organ Maintenance	860			1,000		0.0%	<b>1,000</b>	
5116 - Snow Removal	2,045	2,425	2,280	2,000	3,890	194.5%	<b>2,500</b>	500
5118 - Lawn Care	1,905	1,562	1,725	2,000	1,940	97.0%	<b>2,000</b>	
5130 - Electricity	7,151	5,759	5,207	6,000	7,003	116.7%	<b>7,000</b>	1,000
5131 - Recycling fee	48	48	48	50	48	96.0%	<b>50</b>	
5132 - Gas & Heat	11,845	12,081	12,770	12,500	17,555	140.4%	<b>15,000</b>	2,500
5134 - Water & Sewer	2,528	3,782	2,040	2,500	1,930	77.2%	<b>2,200</b>	-300
5136 - Waste Removal	2,025	1,153	751	850	1,022	120.2%	<b>850</b>	
5140 - Telephone	2,386	2,329	1,988	2,000	1,882	94.1%	<b>2,000</b>	
5150 - Building Repair & Maintenance	15,042	4,405	8,251	6,000	2,411	40.2%	<b>8,000</b>	2,000
5152 - Equipment Repair & maintenance	2,755	1,740	3,468	3,000	2,825	94.2%	<b>3,000</b>	
5156 - Furniture	390			1,000		0.0%	<b>1,000</b>	
5161 - Night Clerk	1,978	1,101		0			<b>0</b>	
5175 - Parking Lot Upkeep	0			500		0.0%	<b>500</b>	
5190 - GST			2,163	1,900	2,231	117.4%	<b>2,250</b>	350
5191 - PST			2,433	2,750	2,298	83.6%	<b>3,350</b>	600
<b>Total Building &amp; Property Expenses</b>	<b>73,204</b>	<b>58,885</b>	<b>65,689</b>	<b>71,663</b>	<b>71,755</b>	<b>100.1%</b>	<b>81,028</b>	<b>9,365</b>



2023 General Budget	2019 Actual	2020 Actual	2021 Actual	2022 Budget	2022 Actual	% Budget	2023 Budget	Change in Budget from 2022
<b>Faith Formation Expenses</b>								
5204 - Confirmation								
5206 - Youth Group Retreat	101							
5210 - Sunday School	664	534	344	500	361	72.2%	500	
5225 - Children/Youth Library Books		52		100		0.0%		-100
5230 - Youth Group	167			200	150	75.0%	200	
5231 - Youth Group Fundraising Exp.	1,413							
5235 - Adult Education	600	631	1,173	600	439	73.2%	600	
5236 - Earthcare Partners Expenses					298		200	200
5240 - Vacation Bible School	34			150	70	46.7%	150	
5260 - Creative Arts	647			200	73	36.7%	100	-100
5280 - Fowl Supper Coat Check								
5290 - GST			18		72			
5291 - PST			0		23			
<b>Total Faith Formation Expenses</b>	<b>3,626</b>	<b>1,217</b>	<b>1,536</b>	<b>1,750</b>	<b>1,486</b>	<b>84.9%</b>	<b>1,750</b>	
<b>Fundraising Expenses</b>								
5400 - General Fundraising Expenses	584	415	506	500	1,958	391.7%	1,750	1,250
<b>Total Fundraising Expenses</b>	<b>584</b>	<b>415</b>	<b>506</b>	<b>500</b>	<b>1,958</b>	<b>391.7%</b>	<b>1,750</b>	<b>1,250</b>
<b>Membership &amp; Pastoral Care Expenses</b>								
5300- Committee Expenses								
5305 - Baptismal Supplies		120	151	100		0.0%	100	
5320 - Communion				50		0.0%	50	
5330 - Confirmation				100		0.0%	100	
5360 - Prayer Shawl expenses								
5370 - Educational Events				100	60	59.9%	100	
5390 - GST				15	3	20.0%	15	
<b>Total Membership &amp; Pastoral Care Expenses</b>	<b>0</b>	<b>120</b>	<b>151</b>	<b>365</b>	<b>63</b>	<b>17.2%</b>	<b>365</b>	
<b>Minister Expenses</b>								
55011 - Salary	67,191	68,468	69,974	72,773	72,773	100.0%	73,294	521
55013 - Travel Expense	147	34		500	136	27.1%	500	
55014 - Telephone	360	360	360	360	360	100.0%	360	
55015 - Continuing Education	963	87	1,491	1,493	435	29.2%	1,543	50
<b>Total Minister Expenses</b>	<b>68,661</b>	<b>68,949</b>	<b>71,825</b>	<b>75,126</b>	<b>73,704</b>	<b>98.1%</b>	<b>75,697</b>	<b>571</b>

<b>2023 General Budget</b>	<b>2019 Actual</b>	<b>2020 Actual</b>	<b>2021 Actual</b>	<b>2022 Budget</b>	<b>2022 Actual</b>	<b>% Budget</b>	<b>2023 Budget</b>	<b>Change in Budget from 2022</b>
<b>Salaries Expenses</b>								
5505 - Office Manager	41,152	40,082	42,737	47,505	47,353	99.7%	<b>49,249</b>	1,744
5508 - Accompanist	7,225	5,589	5,852	6,373	6,013	94.4%	<b>6,589</b>	217
5510 - Organist	2,677	649		3,104	1,724	55.6%	<b>3,209</b>	106
5512 - Choir Director	18,134	18,134	18,507	19,247	19,246	100.0%	<b>19,898</b>	651
5513 - Wedding Staff	350	375		350	1,600	457.1%	<b>350</b>	
5514 - Funeral Staff	4,750	675	600	1,300	1,700	130.8%	<b>1,300</b>	
5515 - Sunday School Coordinator	7,097	7,097	7,253	7,728	7,544	97.6%	<b>7,988</b>	260
5516 - Youth Program Coordinator	8,517							
5517 - Communication Coordinator	3,249	1,354						
5518 - Caretaker	15,623	13,260	13,549	14,087	14,087	100.0%	<b>14,564</b>	477
5525 - Staff Recognition	112	173	227	300	190	63.5%	<b>300</b>	
5540 - Staff Training and Development	1,000	220		2,000		0.0%	<b>2,000</b>	
<b>Total Salaries Expenses</b>	<b>109,886</b>	<b>87,608</b>	<b>88,725</b>	<b>101,993</b>	<b>99,458</b>	<b>97.5%</b>	<b>105,448</b>	<b>3,455</b>
<b>Total All Salaries Expenses</b>	<b>178,547</b>	<b>156,557</b>	<b>160,550</b>	<b>177,119</b>	<b>173,162</b>	<b>97.8%</b>	<b>181,145</b>	<b>4,026</b>
<b>Payroll Expenses</b>								
5550-1 - CPP - Company	6,289	5,928	6,491	7,300	7,313	100.2%	<b>7,400</b>	100
5550-12 - Workers Compensation	353	250	236	275	255	92.6%	<b>275</b>	
5550-14 - Employer Indemnity	74	82	98	120	102	84.9%	<b>120</b>	
5550-2 - EI - Company	3,170	2,810	2,900	3,100	3,119	100.6%	<b>3,200</b>	100
5550-4 - Church Pension	13,540	12,595	12,901	14,000	13,658	97.6%	<b>14,000</b>	
5550-6 - Group Health Plan	7,492	7,553	9,332	10,150	11,791	116.2%	<b>12,000</b>	1,850
5550-8 - Restorative Care	1,550	1,566	1,935	2,100	2,049	97.6%	<b>2,100</b>	
5550-9 PST on benefits								
5585 - Payroll Charges	332	330	326	350	473	135.2%	<b>350</b>	
5590 - GST			24		24			
5591 - PST			28		28			
<b>Total Payroll Expenses</b>	<b>32,800</b>	<b>31,114</b>	<b>34,270</b>	<b>37,395</b>	<b>38,812</b>	<b>103.8%</b>	<b>39,445</b>	<b>2,050</b>
<b>Total All Ministry and Personnel Expenses</b>	<b>211,347</b>	<b>187,671</b>	<b>194,820</b>	<b>214,514</b>	<b>211,974</b>	<b>98.8%</b>	<b>220,590</b>	<b>6,076</b>

<b>2023 General Budget</b>	<b>2019 Actual</b>	<b>2020 Actual</b>	<b>2021 Actual</b>	<b>2022 Budget</b>	<b>2022 Actual</b>	<b>% Budget</b>	<b>2023 Budget</b>	<b>Change in Budget from 2022</b>
<b>Outreach Expenses</b>								
5600 - Committee Expense				250		0.0%	<b>250</b>	
5601 - Canadian Food Grains Bank	400	400	450	400	5,550	1387.5%	<b>500</b>	100
5603 - Christmas in July	960	275	1,625	1,000	1,425	142.5%	<b>1,500</b>	500
5605 - Christmas Hampers	1,780	3,444	4,080	2,500	5,135	205.4%	<b>3,500</b>	1,000
5606 - Fair Trade Sales	870	170	718	500	982	196.4%	<b>500</b>	
5611 - Camp Shagabec			150		2,740		<b>2,500</b>	2,500
5614 - Ukrainian Appeal					1,868			
5615 - Cards for Ukraine								
5616 - Fundraising Supper	1,930						<b>2,000</b>	2,000
5617 - Fundraising Auction	1,767						<b>1,500</b>	1,500
5618 - Fundraising Donations	765						<b>500</b>	500
5661 - Benevolent Fund	1,000	992	1,000	1,000	1,150	115.0%	<b>1,000</b>	
5671 - Loose Change Supper Expenses	2,906	674		2,000	337	16.9%	<b>1,500</b>	-500
5672 - Loose Change Supper - Hampers	1,434	622		1,500	475	31.7%	<b>1,500</b>	
5674 - Loose Change Supper - M & S				0				
5690 - GST					9			
5691 - PST					11			
<b>Total Outreach Expenses</b>	<b>13,812</b>	<b>6,577</b>	<b>8,023</b>	<b>9,150</b>	<b>19,682</b>	<b>215.1%</b>	<b>16,750</b>	<b>7,600</b>
<b>M&amp;S National Expenses</b>								
5700 - Allocation - General Operating	17,000	7,000	7,000					
<b>Total M&amp;S National Expenses</b>	<b>17,000</b>	<b>7,000</b>	<b>7,000</b>	<b>0</b>	<b>0</b>		<b>0</b>	
<b>Sundry Expenses</b>								
5806 - Living Skies Regional Council	300			1,000		0.0%	<b>1,000</b>	
5809 - Presbytery Expenses								
5820 - Swift Current Ministerial & Chapliancy	625	625	625	625	650	104.0%	<b>1,150</b>	525
5845 - PST Reimbursement	332							
5870 - Miscellaneous								
<b>Total Sundry Expenses</b>	<b>1,257</b>	<b>625</b>	<b>625</b>	<b>1,625</b>	<b>650</b>	<b>40.0%</b>	<b>2,150</b>	<b>525</b>

<b>2023 General Budget</b>	<b>2019 Actual</b>	<b>2020 Actual</b>	<b>2021 Actual</b>	<b>2022 Budget</b>	<b>2022 Actual</b>	<b>% Budget</b>	<b>2023 Budget</b>	<b>Change in Budget from 2022</b>
<b>Worship &amp; Music Expenses</b>								
5904 - Senior Choir Music		94		200		0.0%	200	
5908 - Radio Broadcasts	4,965	5,000	4,830	1,200	1,255	104.6%	1,300	100
5910 - Pulpit Supply	1,537	864	1,768	2,500	1,052	42.1%	2,000	-500
5912 - Decorations			49	200	386	193.0%	200	
5914 - Worship Supplies	141	168	276	300	59	19.6%	300	
5920 - Hymn Books	107			0			0	
5930 - Watota Choir	1,471							
5930 - Advertising	169		72	160	118	74.0%	160	
5932 - License & Copyright	370	260	337	400	337	84.3%	400	
5934 - Honoraria Music				0			0	
5936 - Summer Worship Child Care	300			0			0	
5940 - Melodies of Xmas	2,010			2,500		0.0%	2,500	
5950 - Video/Audio/Live Streaming	13			1,800	1,705	94.7%	1,800	
5955 - Sound System Operator	1,300	1,650	2,225	1,300	1,550	119.2%	1,400	100
5960 - Miscellaneous		60						
5990 - GST			257	150	71	47.6%	150	
5991 - PST			10	50	7	13.4%	50	
<b>Total Worship &amp; Music Expenses</b>	<b>12,383</b>	<b>8,096</b>	<b>9,825</b>	<b>10,760</b>	<b>6,540</b>	<b>60.8%</b>	<b>10,460</b>	<b>-300</b>
<b>Total Expenses</b>								
	<b>364,943</b>	<b>301,734</b>	<b>313,672</b>	<b>332,094</b>	<b>337,626</b>	<b>101.7%</b>	<b>357,780</b>	<b>25,686</b>
<b>Net adjusted without CEWS Subsidies</b>	<b>-42,123</b>	<b>57,566</b>	<b>-36,629</b>	<b>-31,094</b>	<b>-50,290</b>	<b>-6.2%</b>	<b>-44,630</b>	<b>-13,536</b>

## First United Church 2023 M&S Budget

2023 M&S Budget	2019 Actual	2020 Actual	2021 Actual	2022 Budget	2022 Actual (August)	% Budget	2023 Budget	Change in Budget from 2022
<b>M &amp; S National Income</b>								
6000 - M & S Special Service	340	245		1,000		0.0%	1,000	
6001 - Living Skies Regional Gathering	394							
6002 - Care Home Services Offering	300	75	85	200	90	44.8%	200	
6003 - Tai Chi								
6004 - PAR Designated to M&S	5,070	5,010	5,170	6,000	3,992	66.5%	6,300	300
6005 - Greeting Cards/Cookies	430			500		0.0%	500	
6006 - Offerings Designated to M&S	2,108	1,186	699	4,500	3,543	78.7%	4,750	250
6007 - Mindfulness Meditation	1,150	243						
6008 - M&S Jar	219	26		100	8	8.1%	50	-50
6009 - Chair Yoga								
6010 - M&S Lenten Pigs	853	962	1,559	2,000	1,364	68.2%	1,500	-500
6011 - Other M&S Fundraisers				700		0.0%	700	
6012 - M&S National - UCW	7,500							
<b>Total M &amp; S National Income</b>	<b>18,365</b>	<b>7,747</b>	<b>7,513</b>	<b>15,000</b>	<b>8,996</b>	<b>60.0%</b>	<b>15,000</b>	

<b>M&amp;S National Expenses</b>								
7000 - M&S Special Service	734	245		1,000		0.0%	1,000	
7002 - Care Home Services Offering	300	75	85	200		0.0%	200	
7003 - Tai Chi								
7004 - PAR - Designated to M & S	5,070	5,010	5,170	6,000		0.0%	6,300	300
7005 - Greeting Cards/Cookies	430			500		0.0%	500	
7006 - Offering Designated to M & S	2,108	1,186	699	4,500		0.0%	4,750	250
7007 - Mindfulness Meditation	1,150	243						
7008 - M & S Jar	219	26		100		0.0%	50	-50
7009 - Chair Yoga	853							
7010 - M & S - Lenten Pig		962	1,559	2,000		0.0%	1,500	-500
7011 - M & S Giving Tree				700		0.0%	700	
7012 - UCW	7,500							
<b>Total M&amp;S National Expenses</b>	<b>18,365</b>	<b>7,747</b>	<b>7,513</b>	<b>15,000</b>	<b>0</b>	<b>0.0%</b>	<b>15,000</b>	

<b>M&amp;S National Historical Giving</b>								
From Operating Fund	17,000	7,000	7,000					
From Planned Giving Fund	5,000	10,000	10,000	5,000			5,000	
<b>Total Givings to M&amp;S - all sources</b>	<b>40,365</b>	<b>24,747</b>	<b>24,513</b>	<b>20,000</b>	<b>24,513</b>		<b>20,000</b>	

**First United Church**  
**Annual General Meeting March 6, 2022**  
via Zoom

Members/Adherents Present: 45 (See list of attendees Appendix 1)

1. Call to order and welcome: Charles Lotochinski called the meeting to order at 1:02 p.m.  
A quorum was present.
2. Opening Prayer: Reverend Annette Taylor
3. No additional items were added to the agenda.
4. Adoption of agenda  
**Motion: Ron Toles/Kevin Hanna**  
**“That the agenda be adopted as presented.” Carried**
5. Extending full voting privileges to adherents for the purpose of this meeting.  
**Motion: Brenda Gruetzner/Fran Jackson**  
**“That we grant full voting privileges to adherents for the purpose of this meeting.” Carried**
6. Approval of minutes of the October 24, 2021 Annual General Meeting.  
**Motion: Kevin Hanna/Shirley Wilson**  
**“That we approve the minutes from the 2021 Annual General Meeting as presented.” Carried**
7. Approval of minutes of November 28, 2021 Affirming Ministry Congregational Meeting.  
**Motion: Sharon Veer/Kevin Hanna**  
**“That we approve the minutes from the 2021 Affirming Ministry Congregational Meeting as presented.” Carried**
8. No new business arising from the minutes of the 2021 Annual General Meeting.
9. Report from Reverend Annette Taylor.
10. Report from the Chair of Council Kevin Hanna.
11. Reports from the staff, committee and working group chairs, excluding the Nominations Report.  
**Motion: Gayleen Turner/Janet Keene**  
**“That we approve all staff, committee and working group reports as presented.” Carried**
12. Election of 2019 Council and Committee members.  
Nominations Report: Donna Barber reported that 3 positions still need to be filled: Vice Chair of Council, Chair of Building & Property and Chair of the nominating committee.  
There were no nominations from the floor.  
**Motion: Donna Barber/Sharyn Erne**  
**“That we accept the Nominations Report as presented.” Carried**
13. Approval of December 2021 Financial Statement  
**Motion: Patti McCleary/Brenda Gruetzner**  
**“That we approve the December 2021 Financial Statement as presented.” Carried**

14. Approval of 2022 Financial Budget

**Motion: Kevin Hanna/Sharon Veer**

**“That we approve the 2022 Financial Budget as presented.” Carried**

15. Appointment of reviewers for 2022 finances

**Motion: Diane Sarson/Shirley Wilson**

**“That the Stewardship Committee appoint reviewers for the 2022 Finances.”  
Carried**

16. Donations from the Planned Giving Fund by the Outreach Committee.

a) **Motion: Patti McCleary/Charles Lotochinski**

**“The Outreach Committee’s goal for fundraising for M and S for 2022 will be \$20,000 with no more than \$5,000 coming from Planned Giving Fund to reach to goal.” Carried**

b) **Motion: Diane Sarson/Janet Keene**

**“The Outreach Committee would raise money for St. Andrew’s College by inviting a speaker to come to a special service to explain their needs and then collecting donations from the congregation. The Planned Giving Account would supplement the amount for a total of \$3,000 in 2022.” Carried**

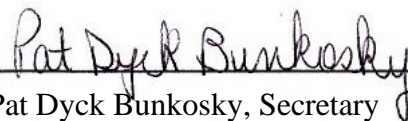
c) **Motion: Jim Worrell/Kevin Hanna**

**“The Outreach Committee would raise money for Camp Shagabec by collecting donations at Camping Sunday service and then the Planned Giving Account would supplement the amount for a total of \$5,000 in 2022.”**

17. Meeting was adjourned at 1:30 p.m.



Charles Lotochinski, Congregational Chair



Pat Dyck Bunkosky, Secretary

***45 Members/Adherents in attendance:***

1. Maxine Olmsted
2. Eva Molyneux
3. Dave Zacharias
4. Verdella Zacharias
5. Rhonda Lotochinski
6. Charles Lotochinski
7. Donna Barber
8. Dwayne Barber
9. Fran Jackson
10. Shirley Dyck-Derkach
11. Wally Derkach
12. Carole Toles
13. Ron Toles
14. Jim Pratt
15. Judy Killaby
16. Diane Sarson
17. Marilyn Szakacs
18. Kevin Hanna
19. Jessie Hanna
20. Melanie Davis
21. Sharon Veer
22. Dixie Green
23. Patti McCleary
24. William Davis
25. Pat Dyck Bunkosky
26. Norma Hain
27. Ann Wiebe
28. Peggy Worrell
29. Jim Worrell
30. Jerry Reuhs
31. Shirley Terlson
32. Gayleen Turner
33. Shirley Wilson
34. Janet Keene
35. Ray Friesen
36. Brenda Gruetzner
37. Jean Macnab
38. Joan Williamson
39. Mary Anderson
40. Stacie Noble-Wiebe
41. Deb Fletcher
42. Jim Fletcher
43. James McLauchlan
44. Rose Lis
45. Annette Taylor



# Congregational Meeting – New Governance Model

First United Church - Swift Current Saskatchewan

Oct 30, 2022

## In Attendance

Kevin Hanna - Member \*meeting chair

Annette Taylor – \* Minister

V Gayleen Turner – Member

Diane Sarson – Member

Shirley Dyck – Member

Wally Derkach – Adherent

Rose Lis – Member

Brenda Warder – Adherent

Mary Anderson – Member

James McLaughlan – Member

Stacie Noble-Wiebe – Adherent

Patti McCleary – Member

Jerry Ruehs – Member

Donna Barber – Member

Faye Jordan – Member

Eva Molyneux – Member

Sharyn Erne – Member

Janet Keene – Member

Dave Zacharias – Member

Verdella Zacharias – member

Sharon Veer – Member

Dixie Green – Member

Valerie Schrumm – Member

Colleen McBean – Member

Linda Mohan – Adherent

Fran Jackson – Member

Betty Pribyl – Member

Ila Wilms – Member

Melanie Davis – Member

Shirley Terlson – Member

Linda Stumpf – Member

Leonard Stumpf – Member

Norma Hain – Member

Brenda Gruetzner – Member\* meeting secretary

Patricia Mierke – Member

Eileen Elkington – Member

Peggy Worrell - Member

1. Call to Order 11:22am
2. Verify Quorum: 20 members need to be present Kevin Hanna Congregational Meeting Chair verified quorum
3. Adoption of the agenda  
**Motion: “That the agenda be adopted as presented”**  
Moved Sharyn Erne  
Seconded Donna Barber  
Carried
4. Extending full voting privileges to adherents for the purpose of this meeting  
**Motion: “That we grant full voting privileges for to adherents for the purpose of this meeting as allowed in the 2022 Manual (B.3.7.2)”**

Moved Norma Hain  
Seconded Ila Wilms  
Carried

5. Report from the Governance Committee on the new governance model  
Note that we are still waiting for final approval from the Regional Council as the appropriate committee did not meet this month due to scheduling challenges  
**Motion: "That First United Church adopt the governance model as presented and allow council the ability to make minor changes if requested by the Regional Council."**

Moved Peggy Worrell  
Seconded Colleen MacBean  
Carried

6. Closing prayer: Rev. Annette Taylor

7. Adjournment – Meeting declared adjourned by Kevin Hanna 11:26am

Secretary

  
\_\_\_\_\_  
Brenda Gruetzner

Congregational  
Chair

  
\_\_\_\_\_  
Kevin Hanna

## **Appendix I - First United Church Governance Structure**

### **Objectives**

1. Streamline and simplify decision-making
2. Fewer Council members and Committee Chairs
3. Encourage more people to get involved
4. Fewer meetings

### **Leadership Team (Keepers of the Vision)**

- Responsible for short-term and long-term planning aligned with the Vision and Mission Statement of First United Church (See p. 4)
- Members are elected by the congregation
- Terms of office - 3 years, with the option of 1 additional term
- Terms of office for Vice-Chair - 1 year prior to assuming role of Chair
- The Leadership Team must meet at least once quarterly, it may decide to meet more often. (Manual 2022 B.7.7.1)

Chair  
Vice-Chair  
Secretary  
Treasurer  
4 Members-at-Large  
Minister

### **Ministry & Personnel Committee**

- Members are elected by the congregation
- Terms of office - 3 years, with the option of 1 additional term
- Report to Leadership Team as required

### **Trustees**

- Elected by the congregation
- Terms of office - 3 years, with the option of 1 additional term
- Report to Leadership Team as required

### **Regional Representatives**

- Elected by the congregation
- Terms of office - 3 years, with the option of 1 additional term
- Report to Leadership Team as required

### **UCW**

- Report to Leadership Team as required  
Social Convenors

Funeral Convenors  
Garage Sale & Third Ave. Boutique

### **Committees**

- Elected by the congregation
- Terms of office - 3 yrs, with the option of 1 additional term
- Chair & Recorder are selected by the committee members (If there is a rotating Chair, a contact person must be named)
- Meet a minimum of 3 times per year
- Report to Leadership Team 3 times per year
  1. Nominations
  2. Building & Property
  3. Stewardship
  4. Faith Formation
  5. Worship & Music
  6. Pastoral Care & Membership
  7. Outreach

### **Interest Groups**

- Not elected by the congregation
- No terms of office
- Will prepare Statement of Purpose for the Policy Manual
- Must be approved by the Leadership Team based on its alignment with the Vision and Mission Statement of First United Church
- Contact person must be named
- Written report required for Annual Report
- May request time on Leadership Team's agenda to present a concern or idea, to request action, or to seek direction
  1. Affirming Ministry
  2. Decorations
  3. Prayer Shawl
  4. Creation Station
  5. Prayer
  6. Refugee Sponsorship
  7. Earthcare Partners
  8. Archives
  9. Loose Change Suppers
  10. Fowl Supper
  11. Thursday morning coffee group
  12. Choir
  13. Fundraising

### **House Groups**

- All households identified through the Congregational Contact list are assigned to one of 10 House Groups.

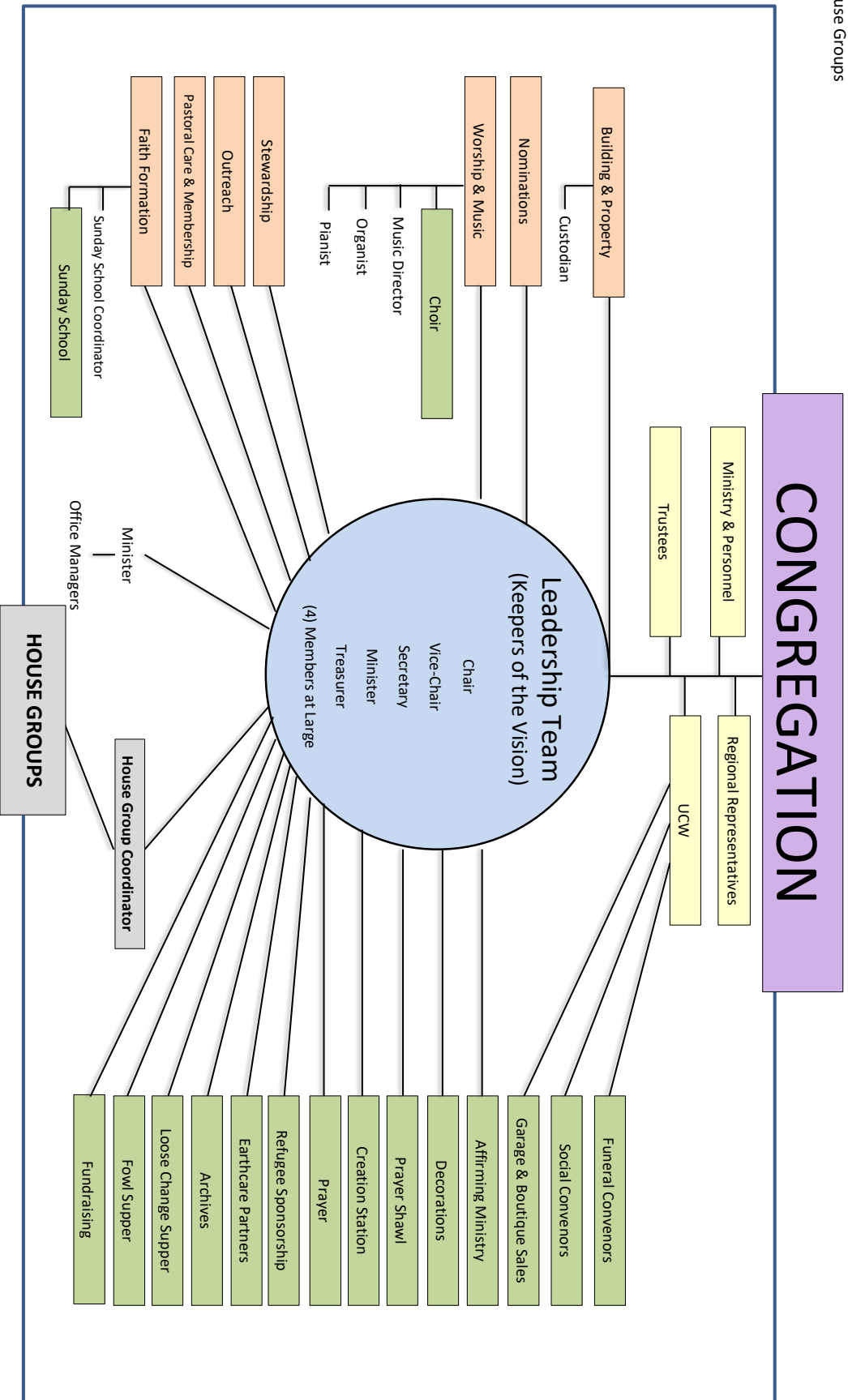
- One House Group Coordinator is elected by the congregation
  - Terms of office - 3 years, with the option of 1 additional term
  - Oversees the organization of the House Groups
  - Keeps in touch with the appropriate Committees to ensure that task descriptions are up to date.
  - Coordinates with the Church Office to ensure House Group lists are kept up to date
  - Maintains ongoing contact with the House Group leaders for the purpose of encouragement and support
- Each House Group is assigned to one month (Sept. - June) and rotated annually.
  - To build community support and create a sense of belonging
  - Has 1 or 2 leaders who are selected from the membership of the House Group
  - Responsible for short-term tasks that enhance the life and work of the congregation
    - Ushers
    - Coffee before and after church
    - Communion
    - Greeters
    - Readers

**Organizational Chart** (see Appendix II)

Approved at a Congregational Meeting on Oct. 30, 2022

# FIRST UNITED CHURCH Organizational Chart

- Interest Groups
- Committees
- House Groups



Appendix II - Organizational Chart